

May Superintendents Report

June 11, 2024

May received 3.67 inches of precipitation

Total avg. flow was 16.12 mgd with the sum being 499.85 million gallons

CBOD = 7mg/L, TSS = 4 mg/L, NH₃ = 0.151 mg/L, Phos = 0.421 mg/L,

Micro Turbine production was 84258 kwh. Solar produced 8169 kwh.

In May Mechanics removed #4 Main pump from service for a complete rebuild. This pump has been in service since approximately 2007.

The South grit channel was taken down for inspection, Helical skimmers are having their wipers either flipped over or replaced as necessary, replaced hoses in the Methanol pumps, worked with Evans mechanical to repair the North elevating grit conveyor.

Electrical department completed two different switching scenarios in support of NYSEGs maintenance on the Harper Sub-Station. They also Locked out -tagged out and removed the wiring from #4 main pump in support of the Mechanics.

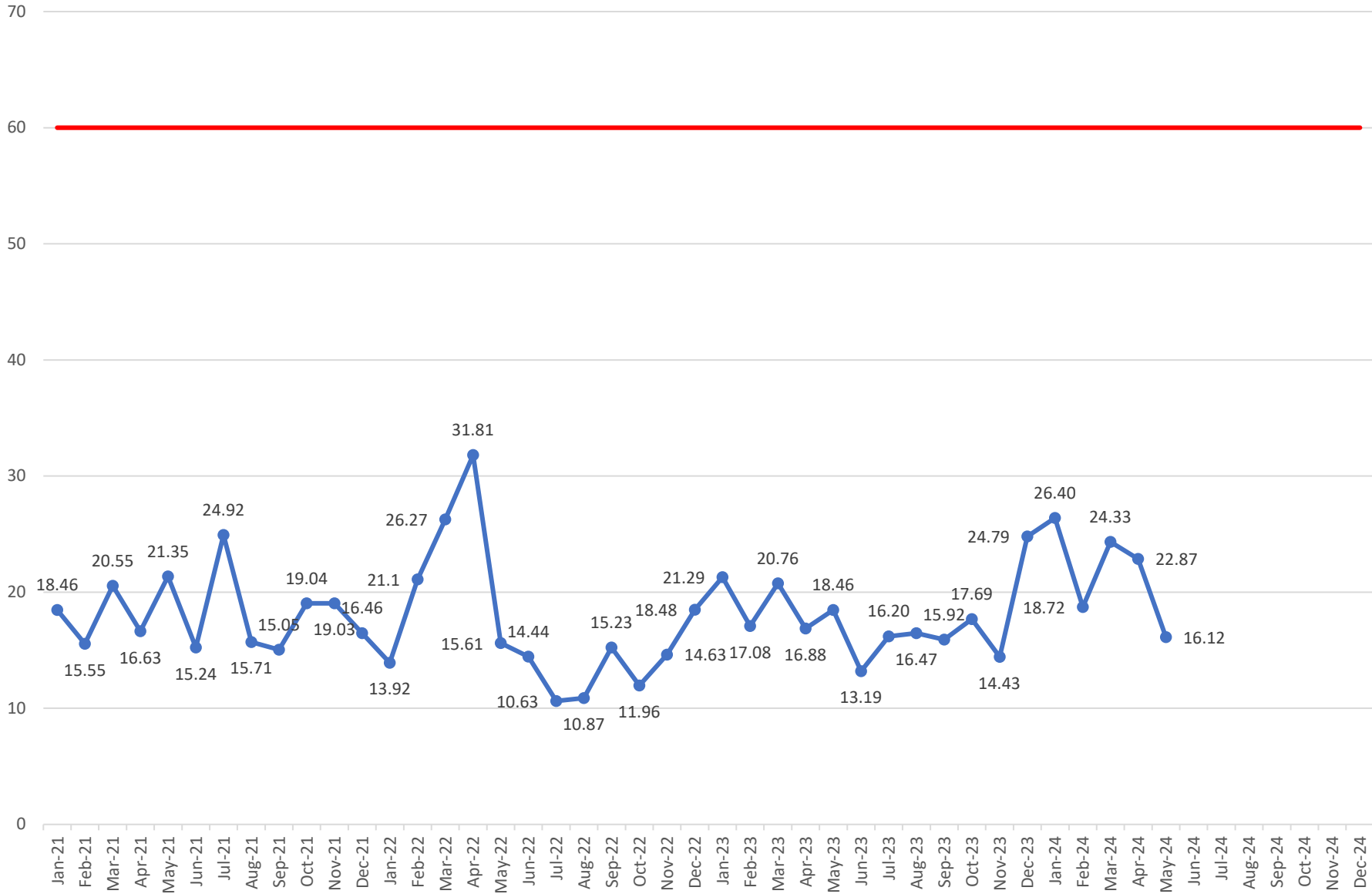
Operations has completed the spring cleaning of the effluent weirs, they were doggedly troubleshooting and making process changes to the Actiflo System, and the DN cells methanol feed system and chemical feed systems. Two operators attended SUNY Morrisville and our own Senior Operator finished 1st in the class.

We continue making progress on the 5-year plan and have started the 2025 Budget process. The Business Manager and Account Clerk have been tracking our budget expenditures daily and provide weekly reports to our department heads.

The Industrial Hygienist has been scheduling safety trainings and supporting work efforts throughout the plant. All ladders have been re-inspected and certified for the year. Chemical bulk storage permit has been updated.

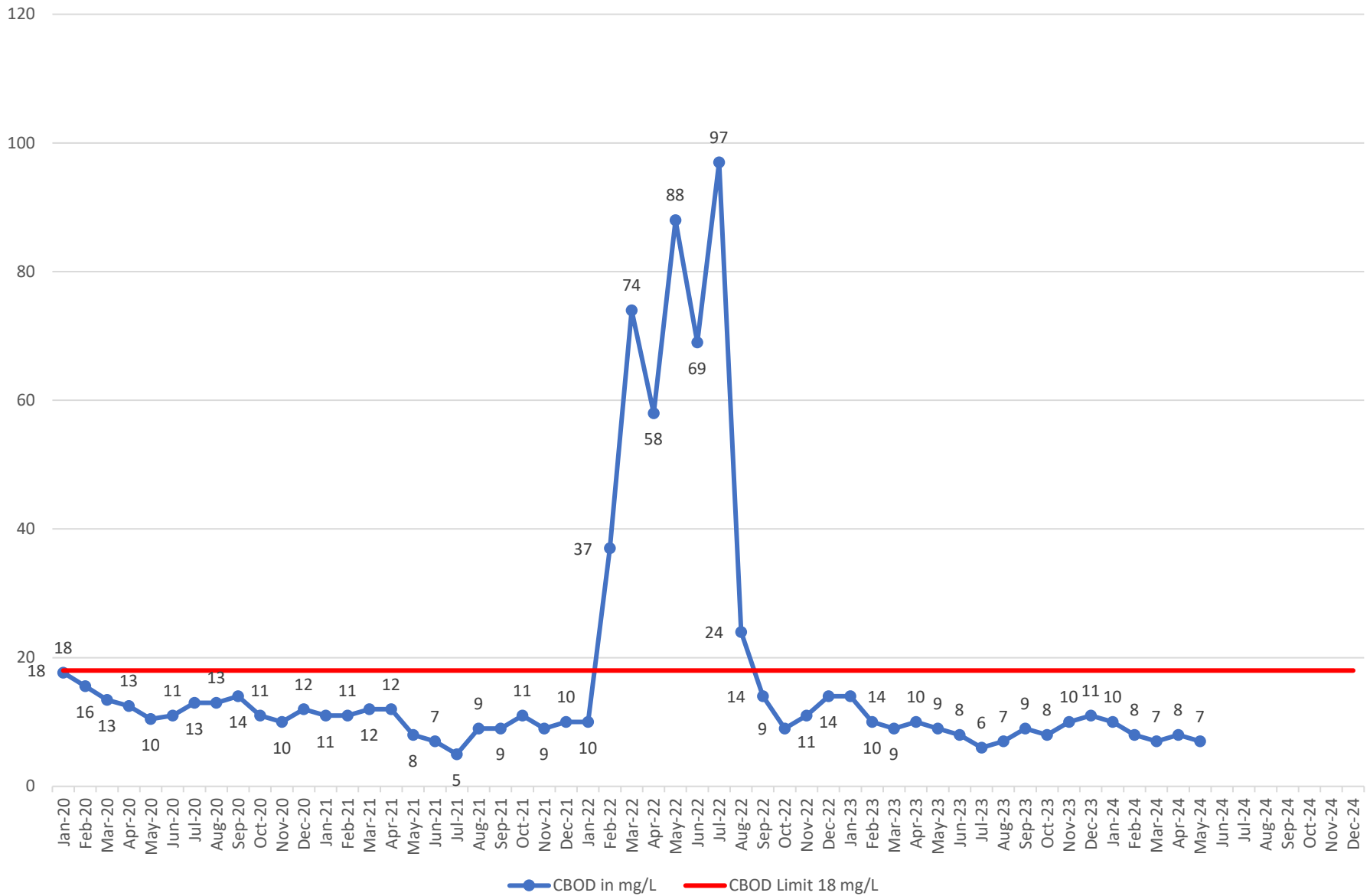
We have been working with the board, City and Village on selecting an Engineer for the TPS project.

2021-2024 Flow

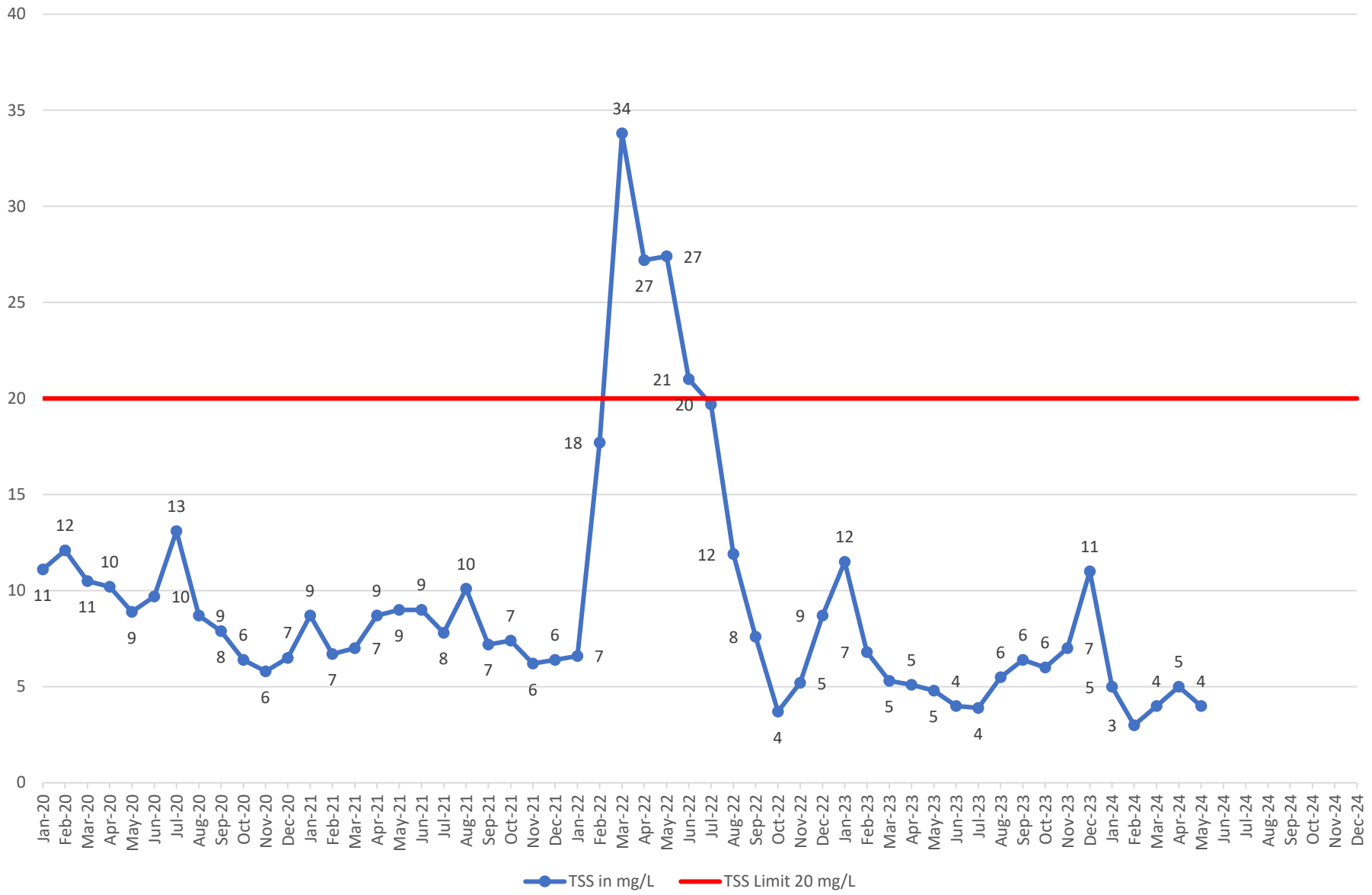


— Flow limit 60 MGD ●— Flow in MGD

2020-2024 CBOD Limit = 18 mg/L/Day Monthly Avg

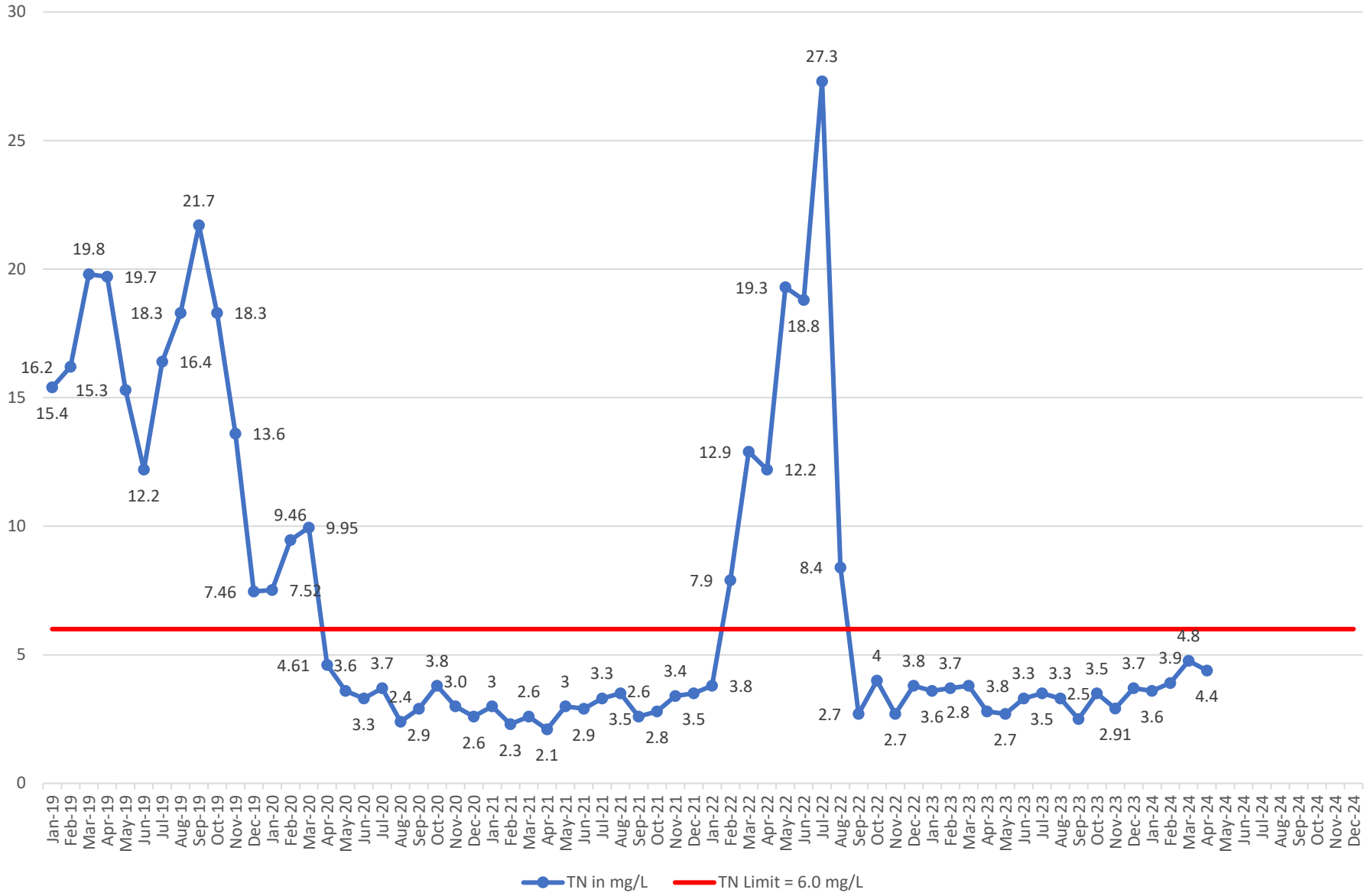


TSS 2020-2024 Limit = 20 mg/L/Day Monthly Avg



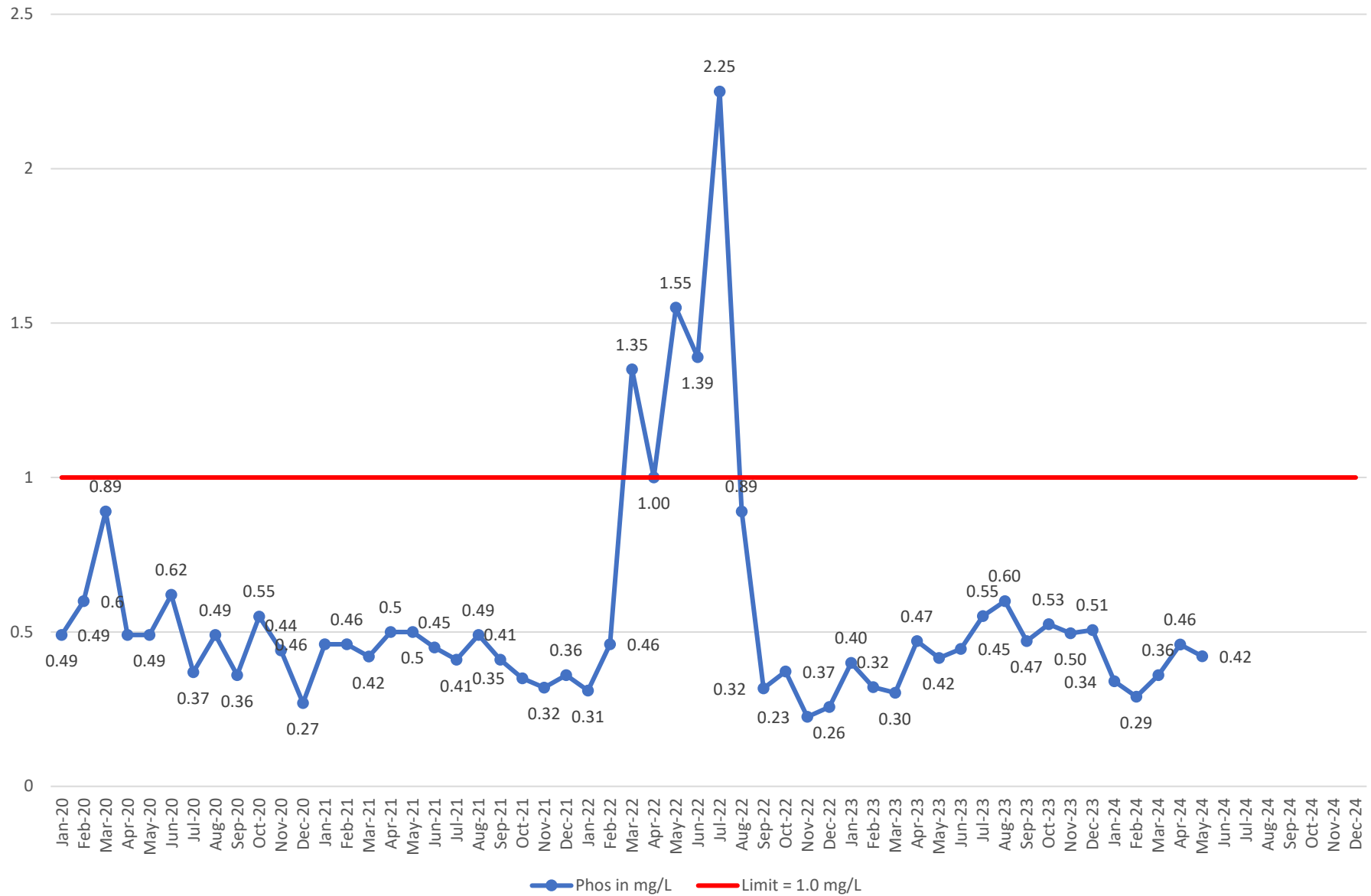
TN 2019-2024

Limit = 6.0 mg/L /Day Monthly Avg

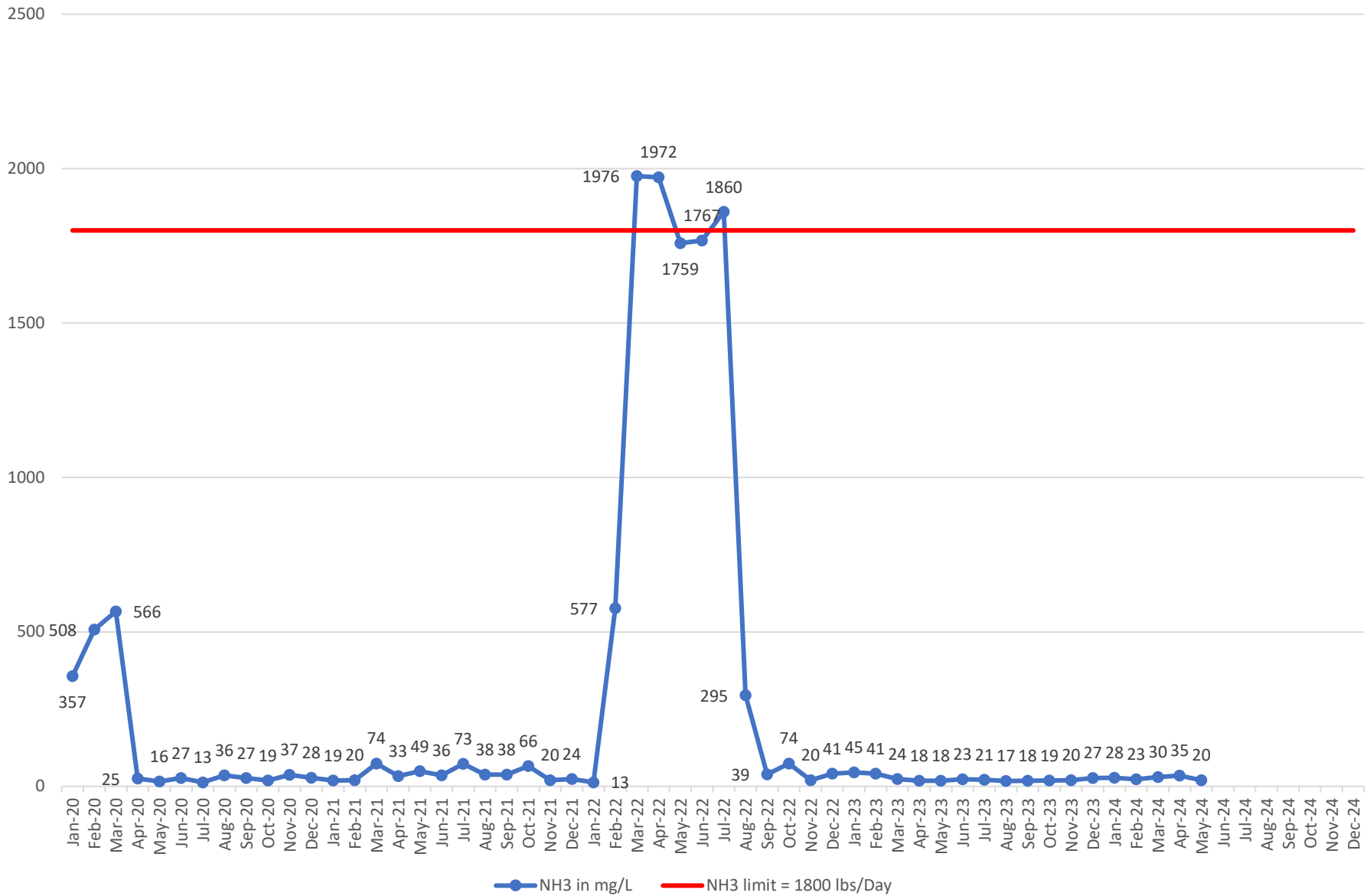


2020-2024 Phos

Limit = 1.0 mg/L/Day Monthly Avg



2020-2024 NH3 in Avg. Lbs/Day Limit = 1800 Lbs/Day



Superintendents Summary Report for 2024																														
	FLOW	Precip	CBOD5			REM	Tot Susp Solids			REM	Settleable Solids			REM	Total Nitrogen			REM	Phosphorous			REM	Ammonia			REM	TKN			REM
	MGD	Inches	In	out	%	In	out	%	In	out	%	In	out	%	In	out	%	In	out	%	In	out	%	In	out	%	In	out	%	
	AVG		limit			limit			limit			limit			limit			limit			limit			limit			limit			
			18 mg/L				20 mg/L				0.3 mL/L				6.0 mg/L				1.0 mg/L				1800 lbs./Day				11000 lbs./Day			
Jan	26.40	4.71	116	10	91%	123	5	96%	7.40	0.10	99%	12.9	3.6	72%	2.40	0.340	86%	7.30	0.14	98%	12.3	1.2	90%							
Feb	18.72	1.63	181	8	96%	194	3	98%	11.10	0.10	99%	17.8	3.9	78%	3.80	0.290	92%	12.90	0.15	99%	17.7	1.5	92%							
Mar	24.33	4.10	137	7	95%	153	4	97%	7.70	0.10	99%	14.2	4.8	66%	2.64	0.358	86%	9.00	0.149	98%	13.7	1.4	90%							
Apr	22.87	4.42	150	8	95%	170	5	97%	9.80	0.10	99%	14.9	4.4	70%	3.19	0.459	86%	9.50	0.202	98%	14.6	1.3	91%							
May	16.12	3.67	175	7	96%	176	4.0	98%	13.00	0.10	99%				3.10	0.421	86%	10.70	0.151	99%										
Jun																														
Jul																														
Aug																														
Sep																														
Oct																														
Nov																														
Dec																														
		TOT																												
Avg	21.69	18.53	152	8	95%	163	4.2	97%	9.80	0.10	99%	15.0	4.2	72%	3.03	0.374	87%	9.88	0.16	98%	14.58	1.35	91%							
Missing 3 Data points for TKN and TN, at this time TKN = 1.3 mg/L and TN = 4.2 mg/L																														
Ammonia limit equates to approx 6 mg/L monthly Avg. / TKN limit equates to 38 mg/L Monthly Avg.																														
TN limit is 6.0 mg/L From O1A REM = Removal %																														
The Permit for TN = Monitoring Monthly Avg. from Outfall OO1, Not to Exceed 639,261 lbs. as a Rolling 12 Month Avg.																														
Outfall OO1 includes Flow Through O1A (DN cells) and O1B (DN Cell Bypass)																														
These numbers represent Outfall from OO1																														

Landfill 2024 Summary

Date	Digested	Lime Stab	Solids Total		Bar screen	Grit and Screen		Grease
	Tons	Tons	Tons	Cost	Tons	Tons	Cost	Tons
January	717.02		717.02	\$28,680.80		22.98	\$1,034.10	
February	613.29		613.29	\$24,531.60		17.01	\$765.45	
March	666.43		666.43	\$26,657.20		29.68	\$1,335.60	
April	685.81		685.81	\$27,432.40		23.46	\$1,055.70	
May	627.24		627.24	\$25,089.60		29.70	\$1,336.50	
June								
July								
August								
September								
October								
November								
December								
Average	661.96		661.96	\$26,478.32		24.57	\$1,105.47	
Total	3,309.79		3,309.79	\$132,391.60		122.83	\$5,527.35	
				\$40/Ton			\$45/Ton	

\$137,918.95

Annual Cost to Date

\$420,000 budgeted for 2024