

June Superintendents Report

July 9, 2024

June received 3.09 inches of precipitation, for a total of 21.62 inches so far this year.

Total avg. flow was 12.56 mgd with the sum being 376.91 million gallons.

CBOD = 10 mg/L, TSS = 7 mg/L, NH₃ = 0.331 mg/L, Phos = 0.564 mg/L

Micro Turbine production was 53,830 kwh. Solar produced 9,049 kwh.

In June Mechanics removed a crumbling staircase and built a wooden platform and stairs. With the Operations department they have started the annual draining and inspection of all 10 Primary tanks.

Operations has been conducting more jar testing to further enhance the operational efficiency of the Actiflo Process. 2 new operator trainees have started their training and are doing well.

Electrical/Instrumentation department brought in the ChemScan rep for the Annual inspection/part update and minor training. They installed cooling fans in the CN gallery PLC (Programmable Logic Controller) control panels. These panels are used for controlling the valve operations for each of the 14 CN Cells, Backwash Waste pumps and spray water pumps.

We continue making progress on the 5-year plan.

The 2025 Budget has been forwarded to the board.

We had a DEC official come to the plant for a Chemical and Bulk Storage inspection.

The EPA has announced an Industrial waste pre-treatment audit, which begins Tuesday July 16th with a 2 hour interview, followed by 3 days of on-site inspection and visits to up to 6 random IWPP participants sites.

The Industrial Hygienist has been scheduling safety trainings and supporting work efforts throughout the plant.

Superintendents Summary Report for 2024																								
	FLOW	Precip	CBOD5		REM	Tot Susp Solids		REM	Settleable Solids		REM	Total Nitrogen			REM	Phosphorous		REM	Ammonia		REM	TKN		REM
	MGD	Inches	In	out	%	In	out	%	In	out	%	In	out	%	In	out	%	In	out	%	In	out	%	
	AVG			limit			limit			limit			limit			limit			limit			limit		
			18 mg/L			20 mg/L			0.3 mL/L			6.0 mg/L				1.0 mg/L			1800 lbs./Day			11000 lbs./Day		
Jan	26.40	4.71	116	10	91%	123	5	96%	7.40	0.10	99%	12.9	3.6	72%	2.40	0.340	86%	7.30	0.14	98%	12.3	1.2	90%	
Feb	18.72	1.63	181	8	96%	194	3	98%	11.10	0.10	99%	17.8	3.9	78%	3.80	0.290	92%	12.90	0.15	99%	17.7	1.5	92%	
Mar	24.33	4.10	137	7	95%	153	4	97%	7.70	0.10	99%	14.2	4.8	66%	2.64	0.358	86%	9.00	0.149	98%	13.7	1.4	90%	
Apr	22.87	4.42	150	8	95%	170	5	97%	9.80	0.10	99%	14.9	4.4	70%	3.19	0.459	86%	9.50	0.202	98%	14.6	1.3	91%	
May	16.12	3.67	175	7	96%	176	4.0	98%	13.00	0.10	99%	20.4	4.0	80%	3.10	0.421	86%	10.70	0.151	99%	20.3	1.3	94%	
Jun	12.56	3.09	193	10	95%	193	7.0	96%	16.30	0.10	99%				4.02	0.564	86%	12.70	0.331	97%				
Jul																								
Aug																								
Sep																								
Oct																								
Nov																								
Dec																								
		TOT																						
Avg	20.17	21.62	159	8	95%	168	4.7	97%	10.88	0.10	99%	16.0	4.1	73%	3.19	0.405	87%	10.35	0.19	98%	15.72	1.34	91%	
Missing 5 Data points for TKN and TN, at this time TKN = 1.7 mg/L and TN =2.2 mg/L																								
Ammonia limit equates to approx 6 mg/L monthly Avg. / TKN limit equates to 38 mg/L Monthly Avg.																								
TN limit is 6.0 mg/L From O1A REM = Removal %																								
The Permit for TN = Monitoring Monthly Avg. from Outfall OO1, Not to Exceed 639,261 lbs. as a Rolling 12 Month Avg.																								
Outfall OO1 includes Flow Through O1A (DN cells) and O1B (DN Cell Bypass)																								
These numbers represent Outfall from OO1																								

Landfill 2024 Summary

Date	Digested	Lime Stab	Solids Total		Bar screen	Grit and Screen		Grease
	Tons	Tons	Tons	Cost	Tons	Tons	Cost	Tons
January	717.02		717.02	\$28,680.80		22.98	\$1,034.10	
February	613.29		613.29	\$24,531.60		17.01	\$765.45	
March	666.43		666.43	\$26,657.20		29.68	\$1,335.60	
April	685.81		685.81	\$27,432.40		23.46	\$1,055.70	
May	627.24		627.24	\$25,089.60		29.70	\$1,336.50	
June	623.85		623.85	\$25,035.20		22.74	\$1,023.30	
July								
August								
September								
October								
November								
December								
Average	655.61		655.61	\$26,237.80		24.26	\$1,091.78	
Total	3,933.64		3,933.64	\$157,426.80		145.57	\$6,550.65	
				\$40/Ton			\$45/Ton	

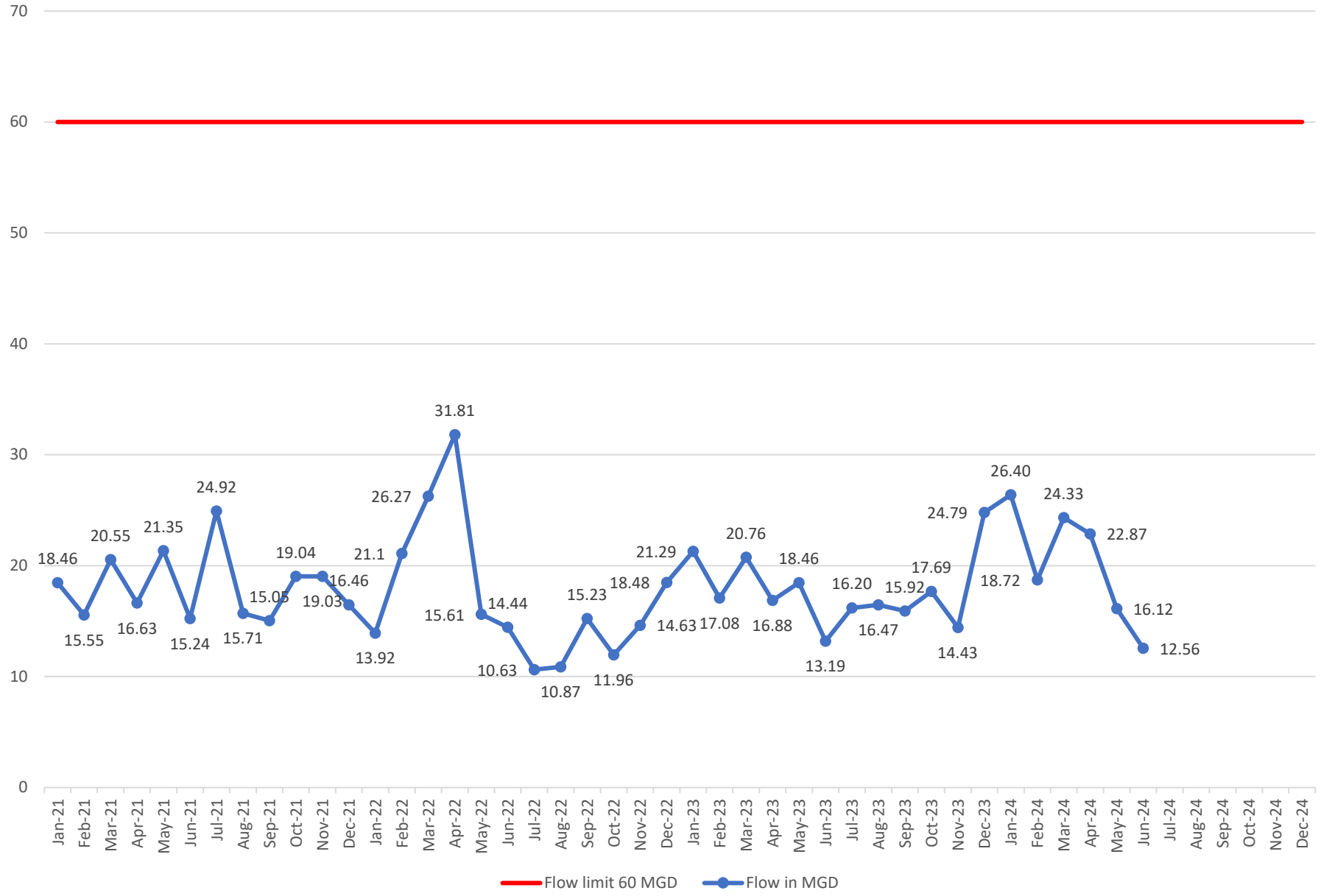
\$163,977.45

Annual Cost to Date

\$420,000 budgeted for 2024

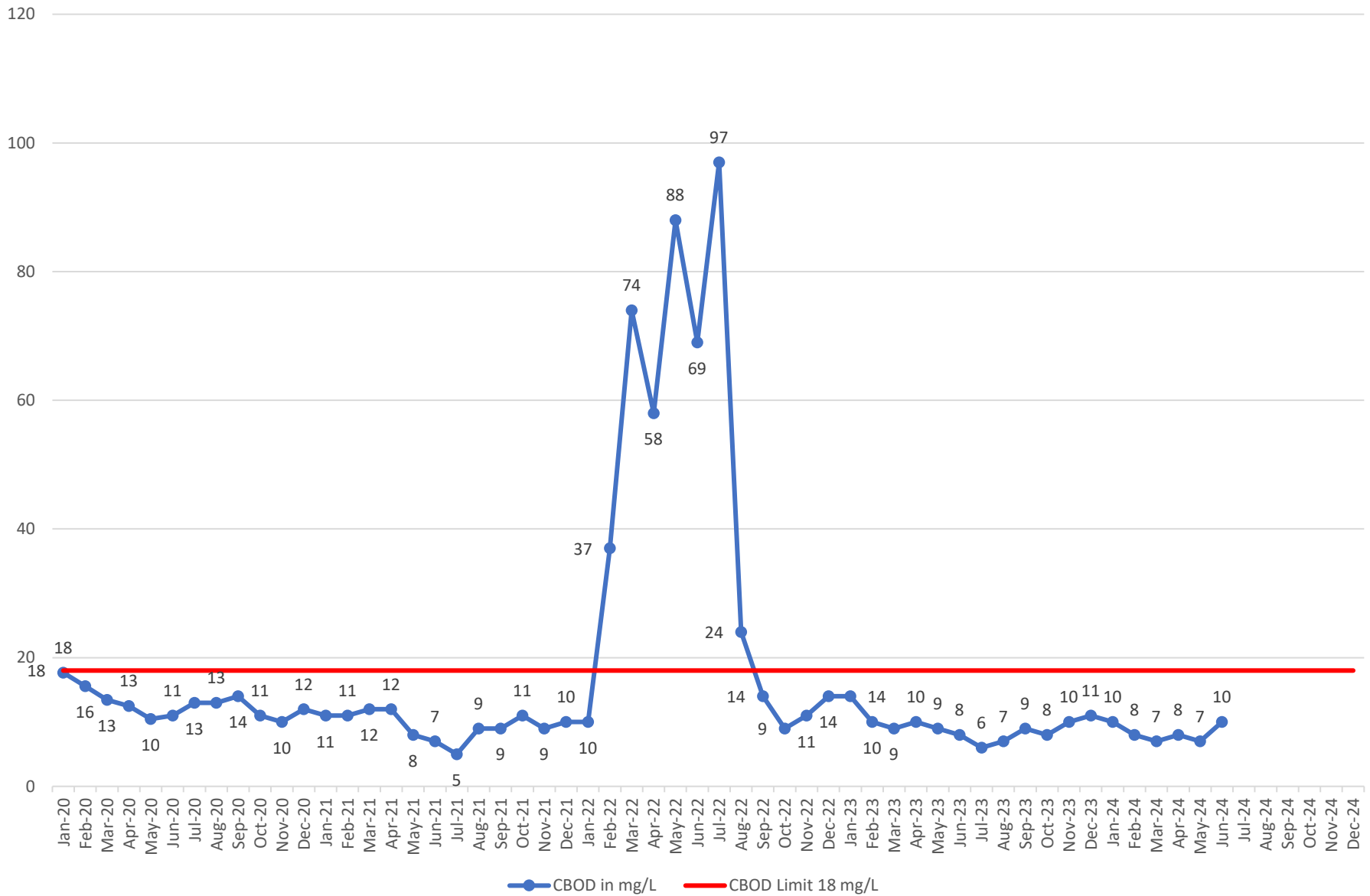
ES8130.54804

2021-2024 Flow

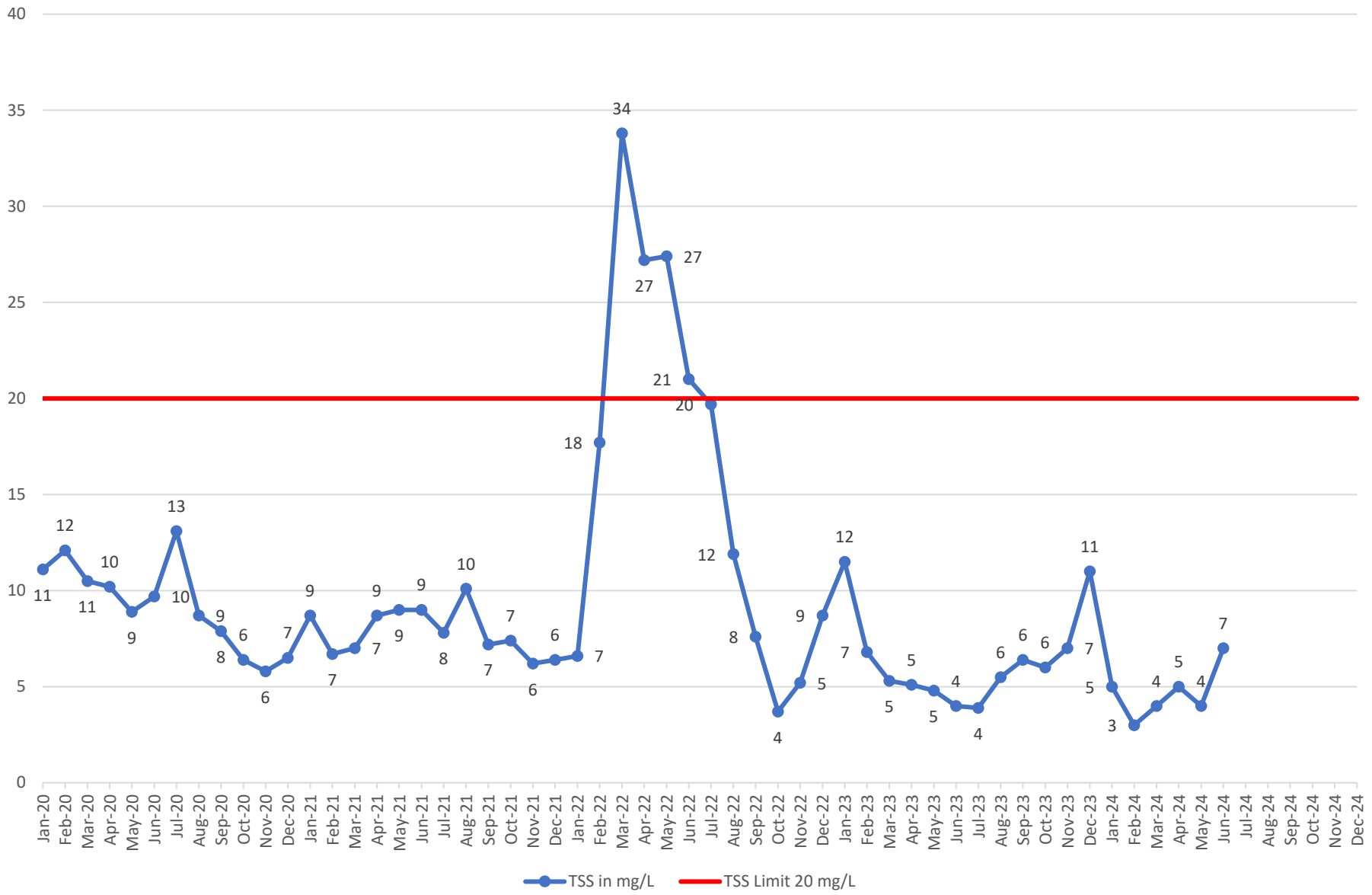


2020-2024 CBOD

Limit = 18 mg/L/Day Monthly Avg

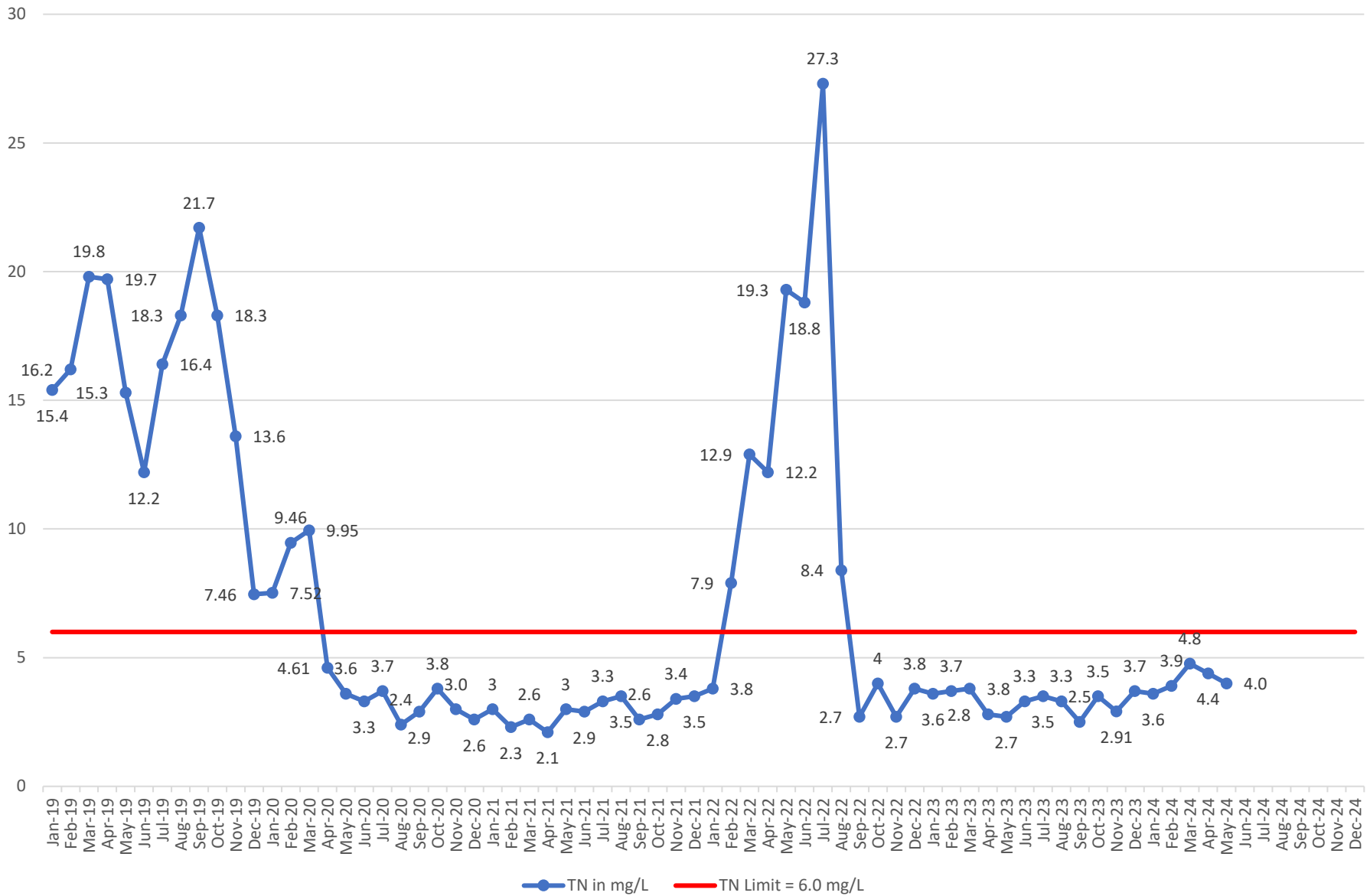


TSS 2020-2024 Limit = 20 mg/L/Day Monthly Avg



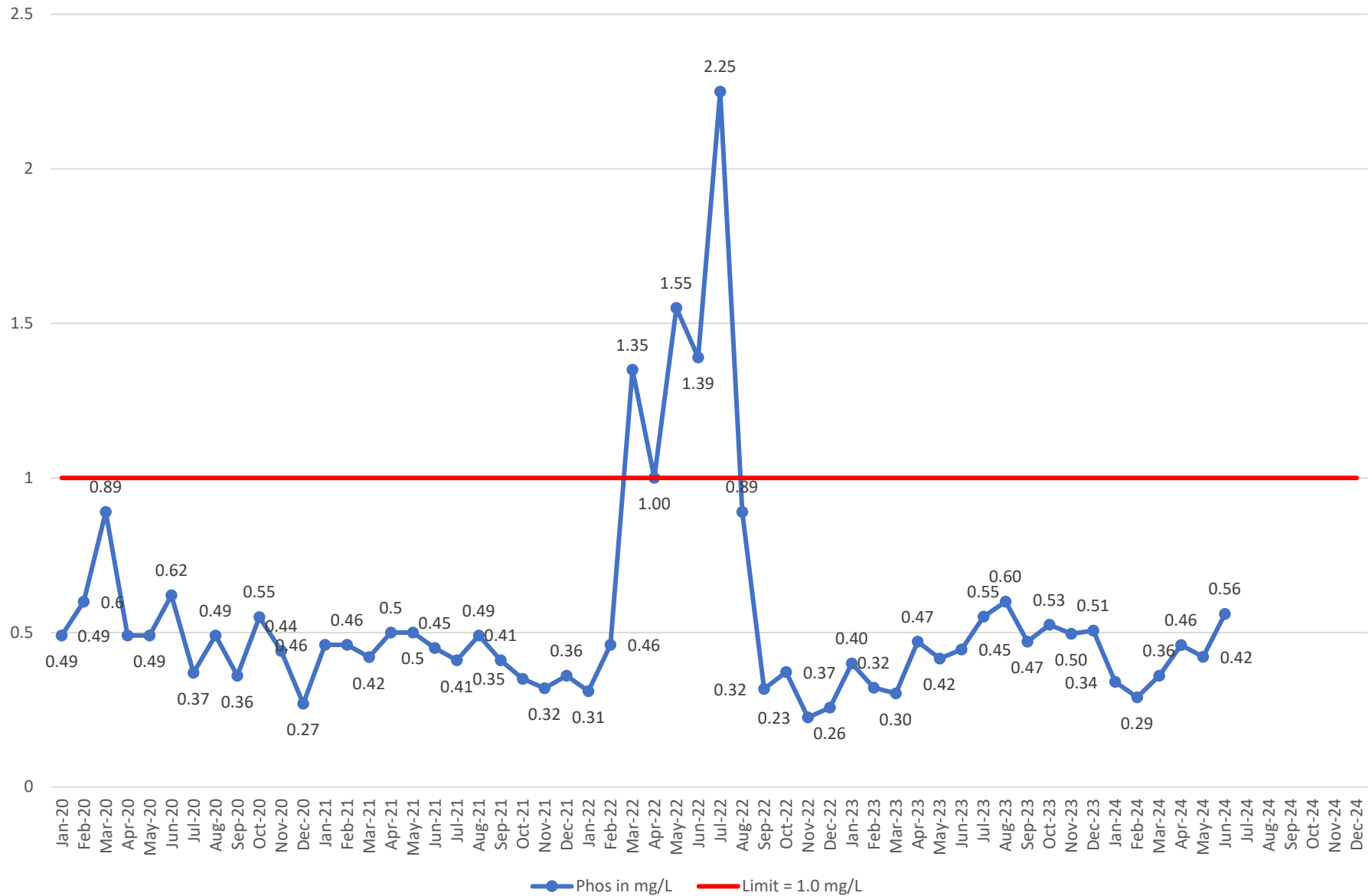
TN 2019-2024

Limit = 6.0 mg/L /Day Monthly Avg

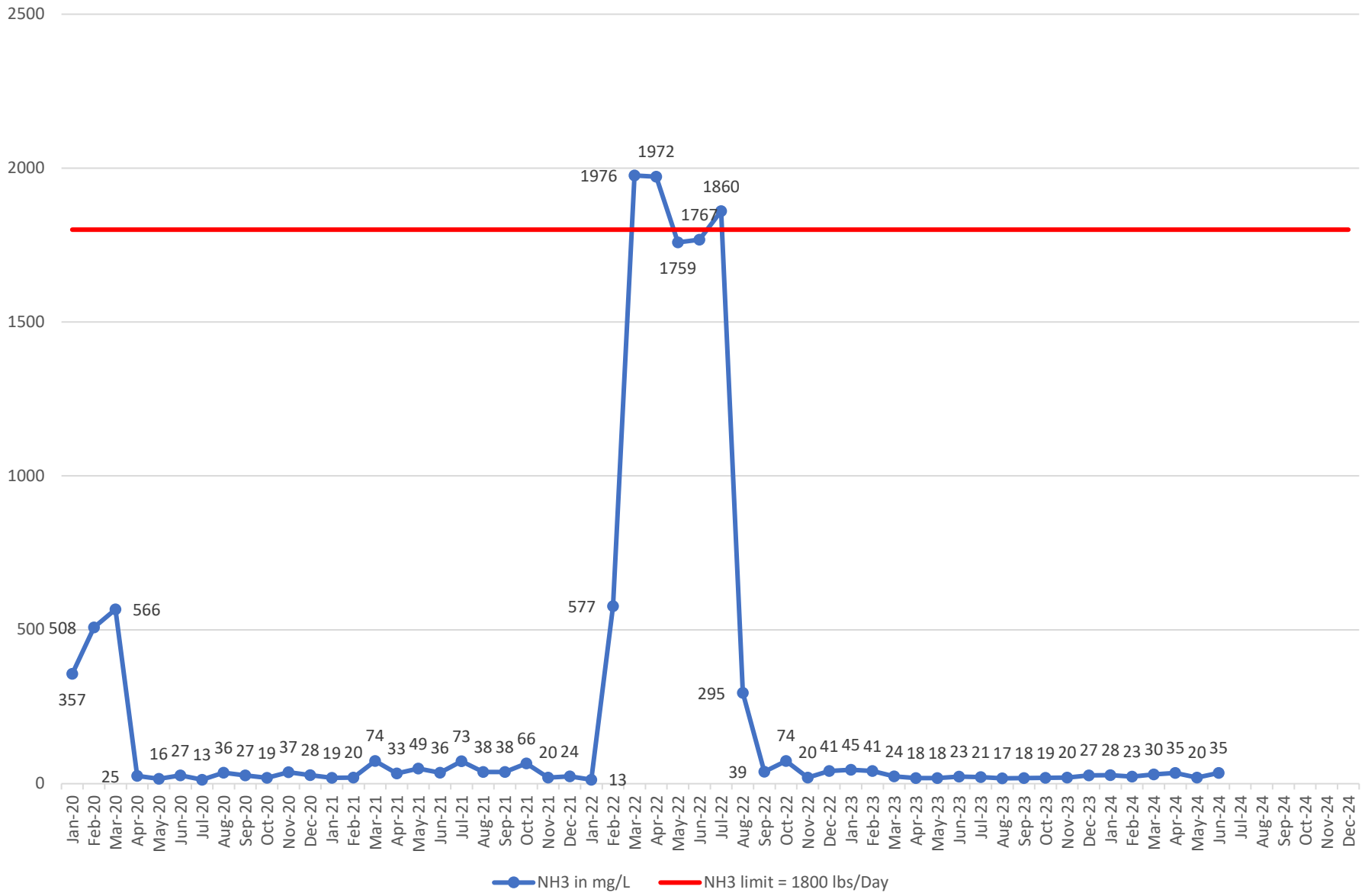


2020-2024 Phos

Limit = 1.0 mg/L/Day Monthly Avg



2020-2024 NH3 in Avg. Lbs/Day
Limit = 1800 Lbs/Day



	MGD Total Flow	Pounds in the Influent Pounds in the River Pounds Removed from Influent									Samples collected 1X per week Calculated as Mo. Avg X Days/Mo.										
		LBS TSS IN	LBS TSS OUT	% Removal	LBS CBOD IN	LBS CBOD OUT	% Removal	LBS TKN IN	LBS TKN OUT	% Removal	LBS NO2+NO3 IN	LBS NO2+NO3 OUT	LBS TN IN	LBS TN OUT	% Removal	LBS PHOS IN	LBS PHOS OUT	% Removal	LBS NH3 IN	LBS NH3 OUT	% Conversion
2023																					
January	21.29	827915	63036	92%	905659	78128	91%	94919	10050	89%	2193	9780	97111	19831	80%	16720	2173	87%	51915	1383	97%
February	17.08	749718	27372	96%	784221	39095	95%	88621	6141	93%	1342	8603	89963	14744	84%	20109	1267	94%	51222	1160	98%
March	20.76	970905	28555	97%	936779	49575	95%	98641	7549	92%	2575	13079	101216	20628	80%	14873	1614	89%	54279	738	99%
April	16.88	763238	22619	97%	829703	40640	95%	88596	6951	92%	761	5843	89358	12795	86%	11662	1851	84%	50375	542	99%
May	18.46	811094	24661	97%	863962	44309	95%	91824	6262	93%	2020	10611	93844	16873	82%	13931	2173	84%	50760	555	99%
June	13.19	687305	13281	98%	650166	24616	96%	67468	5438	92%	228	6136	67696	11577	83%	10310	1648	84%	50712	703	99%
July	16.20	699650	16536	98%	619230	23771	96%	62623	4928	92%	734	10488	63357	15416	76%	10057	2422	76%	36765	643	98%
August	16.47	723029	23711	97%	686944	30099	96%	73856	5759	92%	445	8583	74301	14342	81%	11886	2467	79%	51836	513	99%
September	15.92	633166	25545	96%	616519	34220	94%	82253	5902	93%	435	4194	82688	10095	88%	12169	1785	85%	50140	547	99%
October	17.69	707918	28571	96%	726132	35391	95%	84797	7622	91%	1061	9597	85857	17219	80%	15295	2163	86%	52089	582	99%
November	14.43	838841	24910	97%	822635	36419	96%	86525	6710	92%	322	3988	86847	10698	88%	18095	1783	90%	50801	592	99%
December	24.79	798471	64887	92%	770439	68299	91%	64683	9034	86%	4347	15482	69030	24516	64%	16620	3616	78%	42832	828	98%
Average	17.76	767604	30307	96%	767699	42047	95%	82067	6862	92%	1372	8865	83439	15728	81%	14311	2080	85%	49477	732	99%
Minimum	13.19	633166	13281	92%	616519	23771	91%	62623	4928	86%	228	3988	63357	10095	64%	10057	1267	76%	36765	513	97%
Maximum	24.79	970905	64887	98%	936779	78128	96%	98641	10050	93%	4347	15482	101216	24516	88%	20109	3616	94%	54279	1383	99%
Total LBS IN/Out		9211250	363,684		9212389	504562		984806	82346		16463	106384	1001268	188734		171727	24962		593726	8786	
LBS Removed		8847566			8707827			902460			-89921		812534			146765			584940		
	Total	LBS	LBS	%	LBS	LBS	%	LBS	LBS	%	LBS	LBS	LBS	LBS	%	LBS	LBS	%	LBS	LBS	%
2024	Flow	TSS IN	TSS OUT	Removal	CBOD IN	CBOD OUT	Removal	TKN IN	TKN OUT	Removal	NO2+NO3 IN	NO2+NO3 OUT	TN IN	TN OUT	Removal	PHOS IN	PHOS OUT	Removal	NH3 IN	NH3 OUT	Conversion
January	26.40	795488	34386	96%	736069	66849	91%	78068	8246	89%	4434	17790	82502	26036	68%	14419	2160	85%	44848	882	98%
February	18.72	866036	13380	98%	792747	37595	95%	77149	7084	91%	1174	11399	78323	18483	76%	15476	1198	92%	51801	660	99%
March	24.33	918522	25921	97%	804365	46764	94%	80457	8945	89%	3606	21334	84063	30280	64%	15094	2081	86%	51156	909	98%
April	22.87	932718	29882	97%	816054	48446	94%	80484	7365	91%	2027	18050	82511	25414	69%	16937	2456	85%	50416	1065	98%
May	16.12	727930	18589	97%	721436	30314	96%	83968	5561	93%	258	11860	84226	17421	79%	12670	1719	86%	44065	612	99%
June	12.56	609278	20819	97%	602255	32145	95%									12006	1681	86%	38597	1057	97%
July																					
August																					
September																					
October																					
November																					
December																					
Average	20.17	808329	23830	97%	745488	43686	94%	80025	7440	91%	2300	16087	82325	23527	71%	14434	1883	87%	46814	864	98%
Minimum	12.56	609278	13380	96%	602255	30314	91%	77149	5561	89%	258	11399	78323	17421	64%	12006	1198	85%	38597	612	97%
Maximum	26.40	932718	34386	98%	816054	66849	96%	83968	8945	93%	4434	21334	84226	30280	79%	16937	2456	92%	51801	1065	99%
Total LBS IN/Out		4849972	142,977		4472926	262113		400126	37201		11499	80433	411625	117634		86602	11295		280883	5185	
LBS Removed		4706995			4210813			362925			-68934		293991			75307			275698		