

# November Superintendents Report

December 10, 2024

In November we received 3.67 inches of precipitation, for a total of 47.77 inches this year.

The Average flow was 12.26 MGD with a Total of 367.68 million gallons.

CBOD = 4 mg/L, TSS = 3 mg/L, Fecals 14 MPN, Ammonia = 0.19 mg/L and Phos = 0.471 mg/L.

Micro-Turbines produced 88,576 KWH in November, up from 40,445 KWH in October.

Solar produced 3,688 KWH in November down from 5,752 KWH in October. After 5 years of service, the Solar array has produced approximately 20% of the initial cost of the Solar Cells.

Electricians worked in support of Matco to test and Clean Head House Electrical gear.

While doing so they took the opportunity to remove power to 5- 480-volt transformers and Panels to perform maintenance.

Mechanics continue performing their maintenance tasks utilizing the CMMS software. Working on North elevating conveyor for Headworks building.

We are waiting for the Plant water pumps which are due at end of December.

TPS project: EDR is scheduled for Dec 20 to support their 60% drawings.

We completed the scheduled tasks for the PBS and CBS NOVs. We have not heard back from the DEC on them.

Visited e-Systems Pre-treatment. We received Univar Solutions Contingency plan and reviewed it. We need to sign and return.

Reached out to Firomar on Charles St. Binghamton, they are behind schedule and will setup a walkthrough with us and GHD when they are up and running.

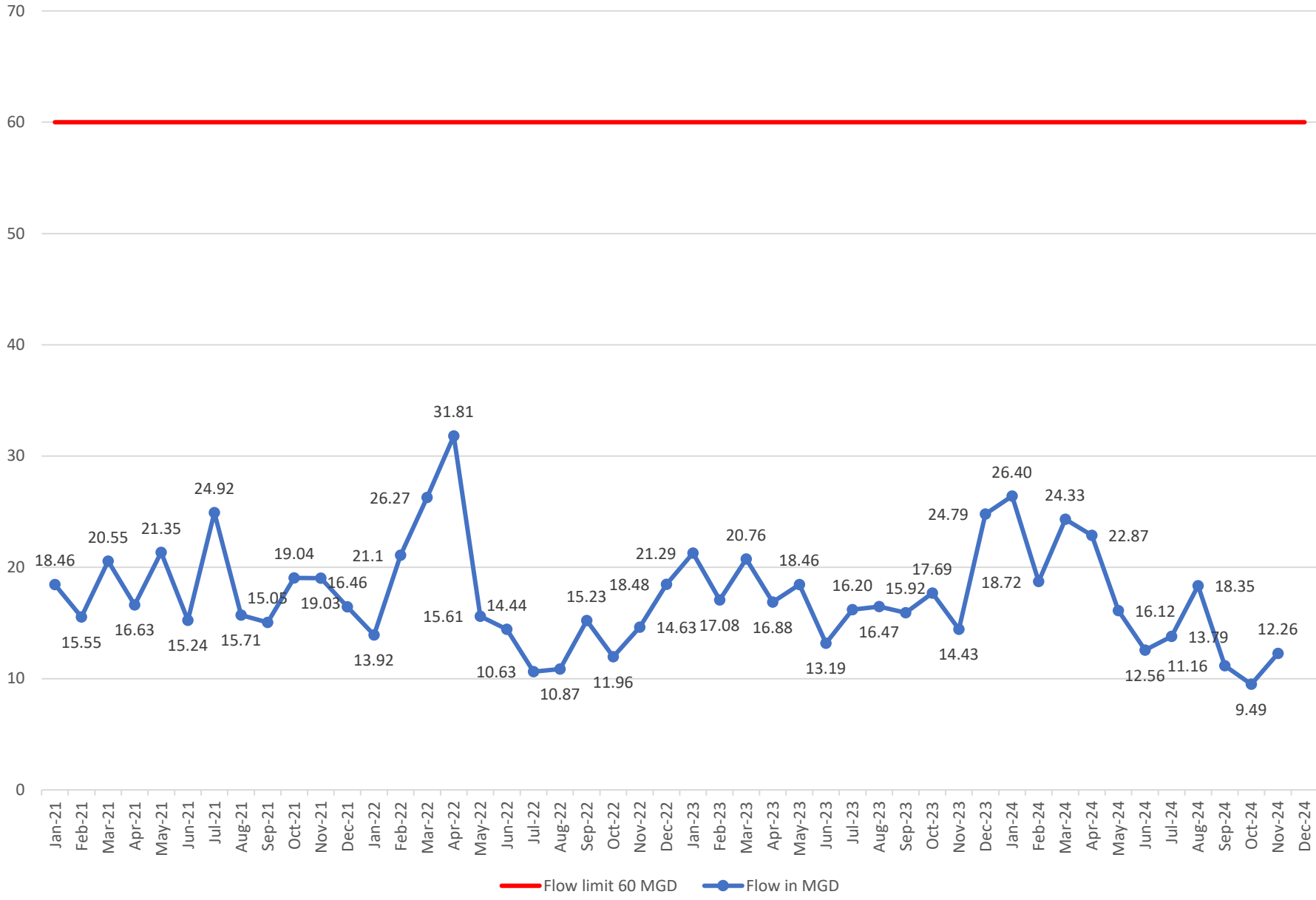
Made a site visit to International Paper to determine if they need to be on Pre-Treatment program.

Notified by the EPA we are to have a Pre-treatment assessment closing conference on 12/17/2024.

Contacted GHD about the Mapping update requirements request by the board. They are performing some Pre-quote assessment.

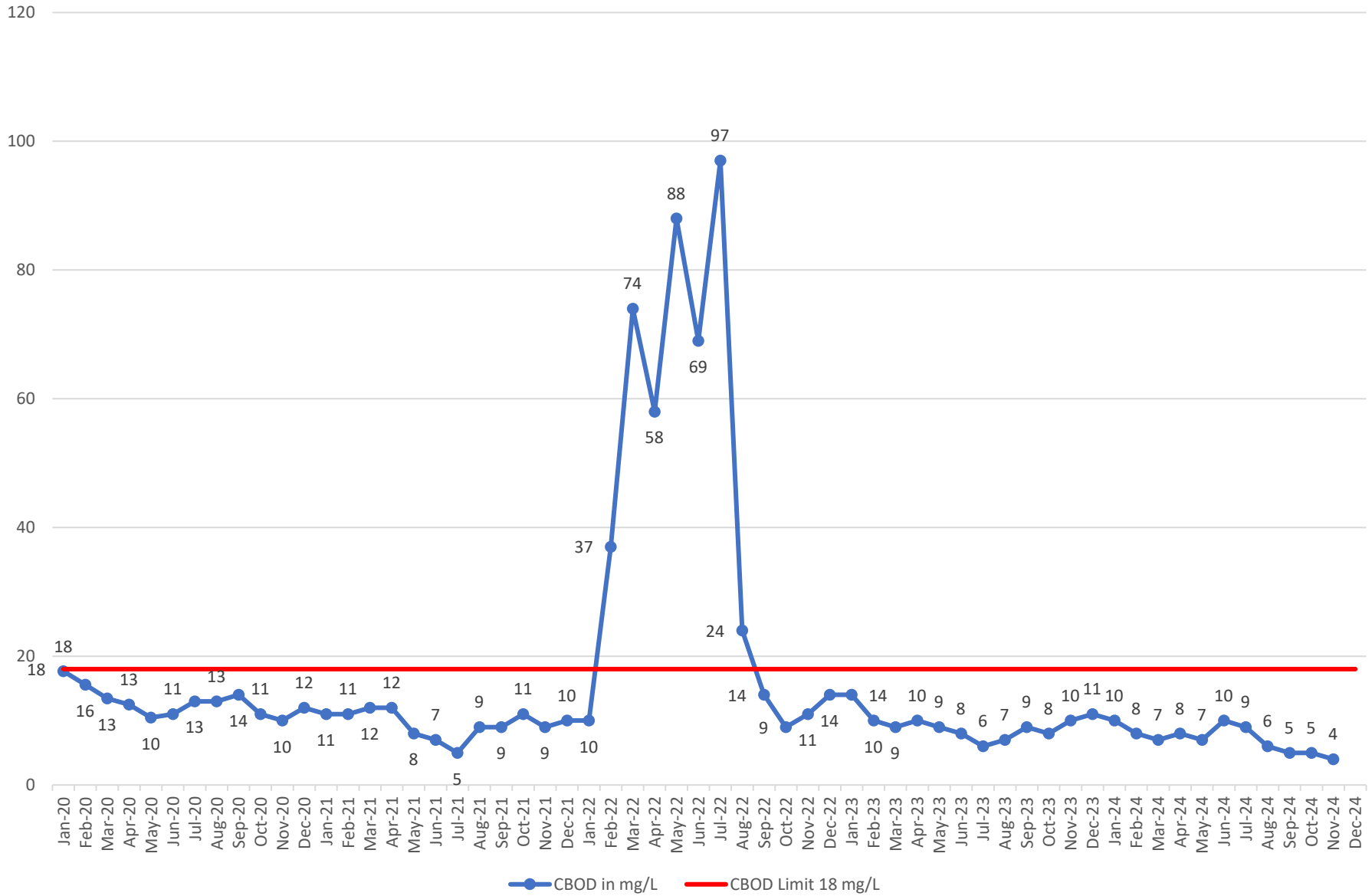
We are preparing for the DEC Report season. To Include the WTC Report, Emerging Contaminates Short-Term Monitoring Program Report, Annual Flow Certification, Biennial Pollutant Scan, WET testing, Stormwater No Exposure Certification, Mercury Minimization Program Status Report, Industrial Pre-Treatment Program Report, Solids Report, and the CSO Annual Report.

### 2021-2024 Flow

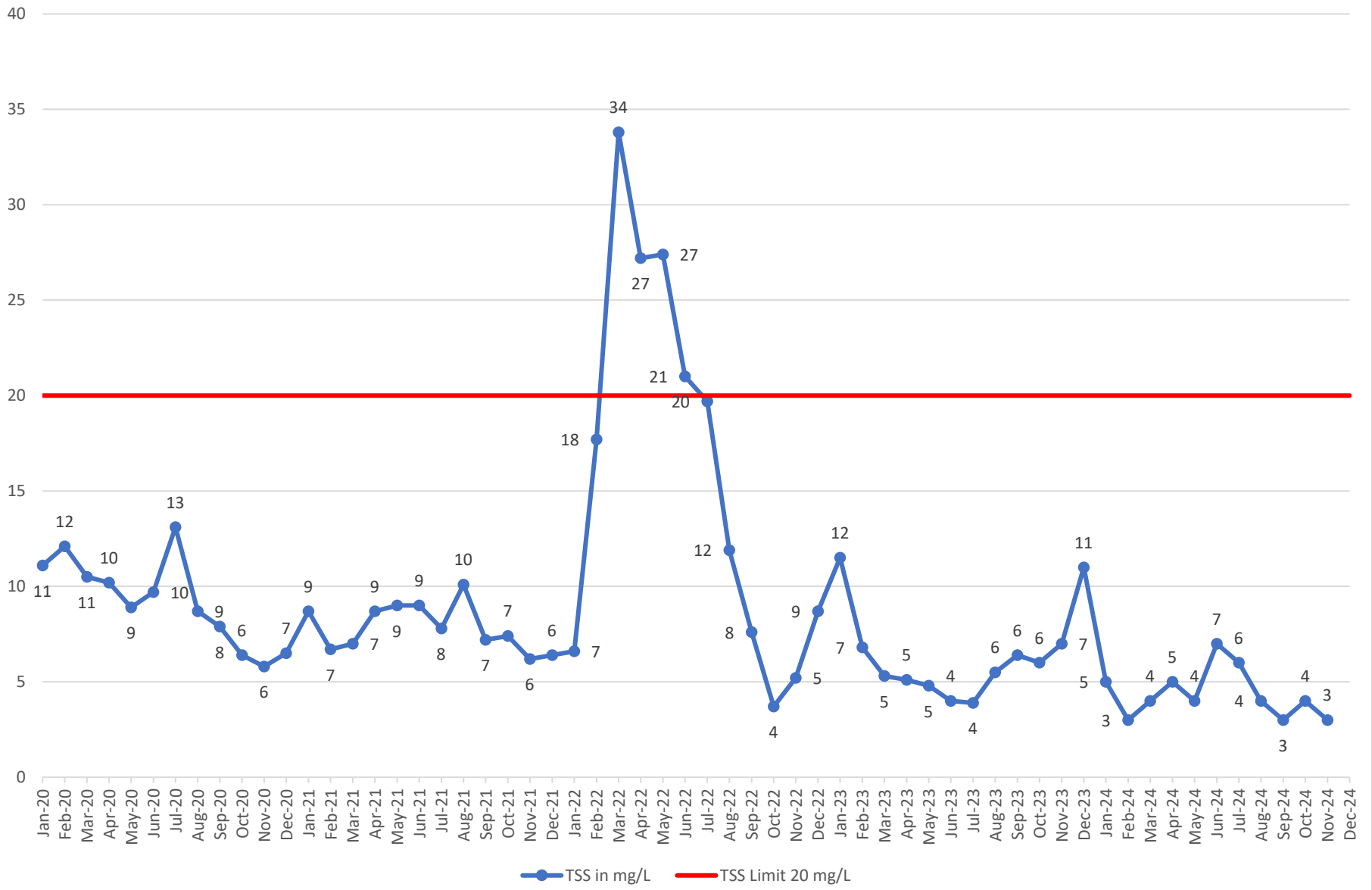


## 2020-2024 CBOD

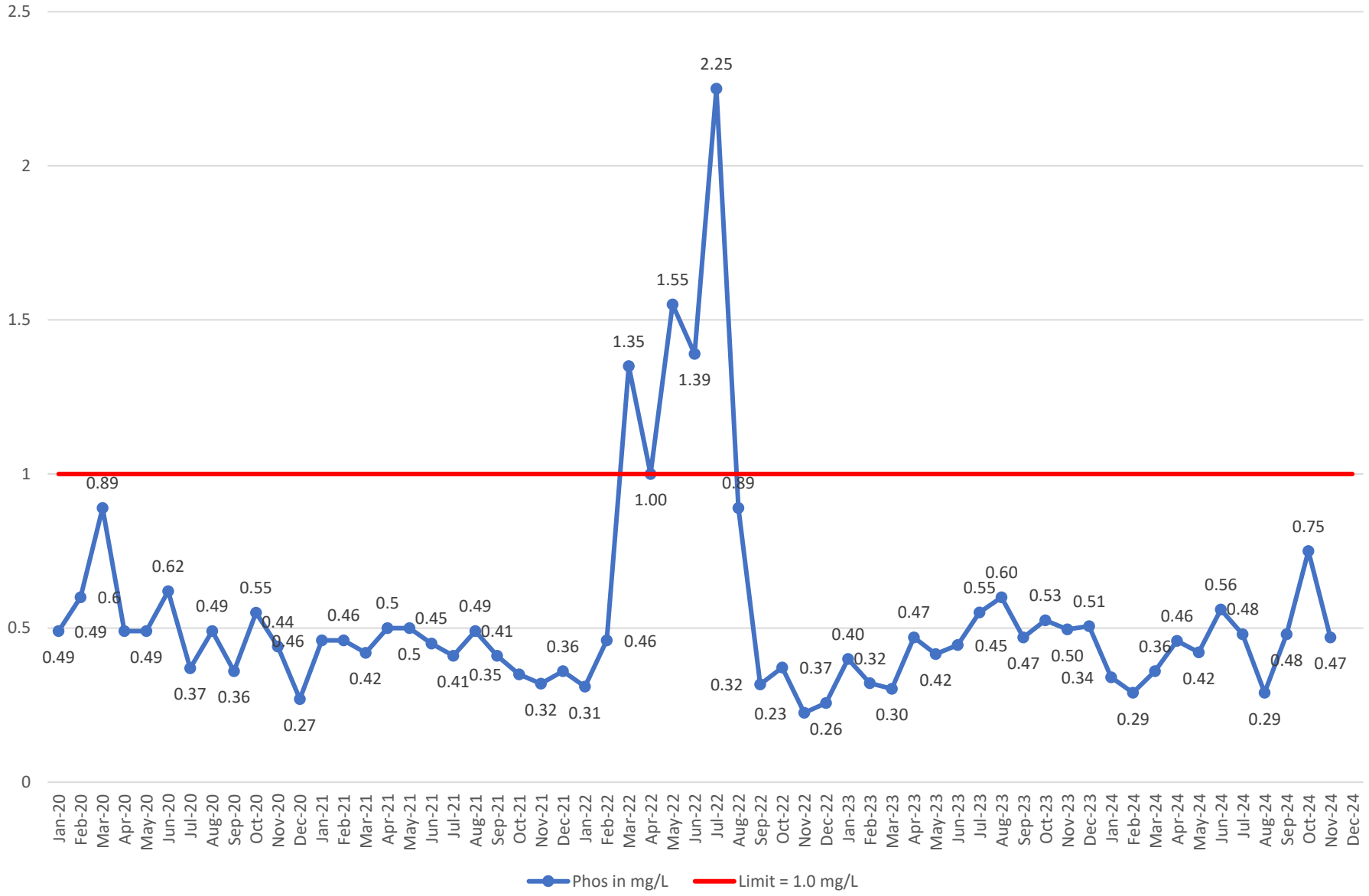
Limit = 18 mg/L/Day Monthly Avg



### TSS 2020-2024 Limit = 20 mg/L/Day Monthly Avg

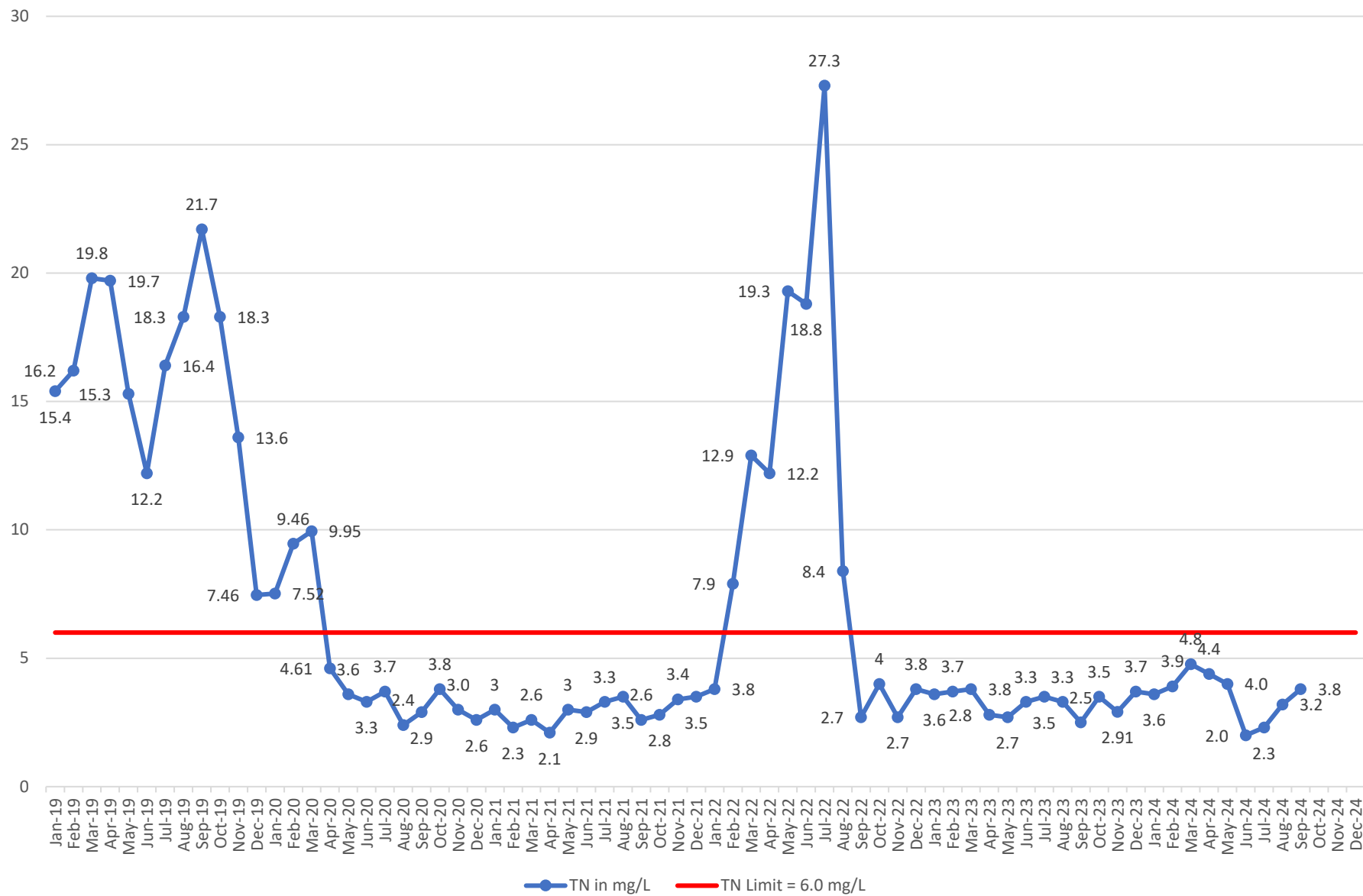


### 2020-2024 Phos Limit = 1.0 mg/L/Day Monthly Avg

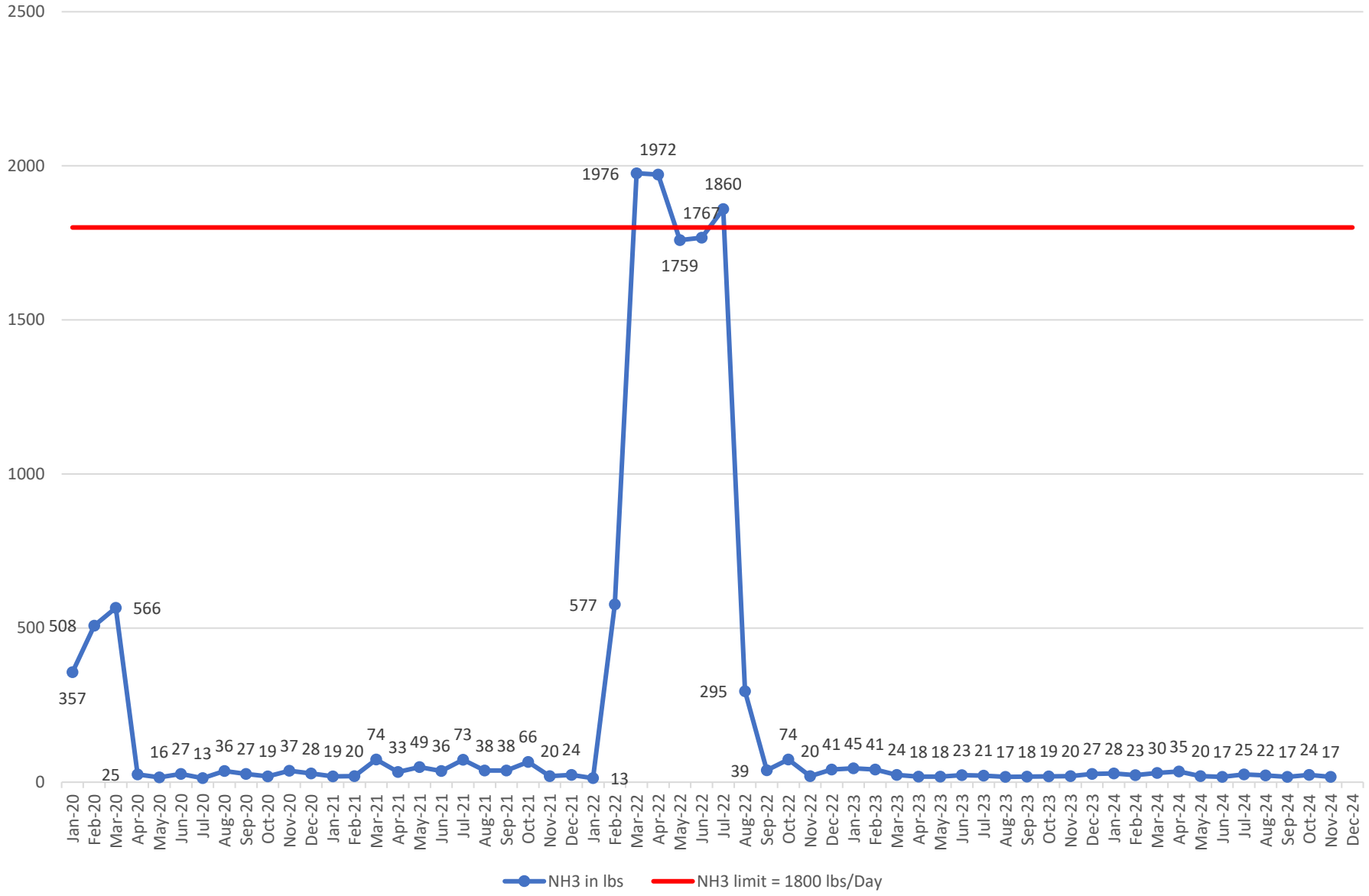


## TN 2019-2024

Limit = 6.0 mg/L /Day Monthly Avg



### 2020-2024 NH3 in Avg. Lbs/Day Limit = 1800 Lbs/Day



Superintendents Summary Report for 2024																										
	FLOW	Precip	CBOD5		REM	Tot Susp Solids		REM	Settleable Solids		REM	Total Nitrogen			REM	Phosphorous			REM	Ammonia		REM	TKN		REM	
	MGD	Inches	In	out	%	In	out	%	In	out	%	In	out	%	In	out	%	In	out	%	In	out	In	out		
	AVG			limit			limit			limit			limit			limit			limit			limit		limit		
			18 mg/L			20 mg/L			0.3 mL/L			6.0 mg/L				1.0 mg/L				1800 lbs./Day			11000 lbs/Day			
Jan	26.40	4.71	116	10	91%	123	5	96%	7.40	0.10	99%	12.9	3.6	72%	2.40	0.340	86%	7.30	0.14	98%	12.3	1.2			90%	
Feb	18.72	1.63	181	8	96%	194	3	98%	11.10	0.10	99%	17.8	3.9	78%	3.80	0.290	92%	12.90	0.15	99%	17.7	1.5			92%	
Mar	24.33	4.10	137	7	95%	153	4	97%	7.70	0.10	99%	14.2	4.8	66%	2.64	0.358	86%	9.00	0.149	98%	13.7	1.4			90%	
Apr	22.87	4.42	150	8	95%	170	5	97%	9.80	0.10	99%	14.9	4.4	70%	3.19	0.459	86%	9.50	0.202	98%	14.6	1.3			91%	
May	16.12	3.67	175	7	96%	176	4	98%	13.00	0.10	99%	20.4	4.0	80%	3.10	0.421	86%	10.70	0.151	99%	20.3	1.3			94%	
Jun	12.56	3.09	193	10	95%	193	7	96%	16.30	0.10	99%	25.6	2.0	92%	4.02	0.564	86%	12.70	0.331	97%	25.6	1.6			94%	
Jul	13.79	6.02	178	9	95%	194	6	97%	14.90	0.10	99%	21.4	2.3	89%	3.74	0.480	87%	12.20	0.199	98%	21.3	1.4			93%	
Aug	18.35	7.14	169	6	96%	189	4	98%	12.50	0.10	99%	18.2	3.2	82%	3.57	0.290	92%	10.70	0.164	98%	18.1	1.09			94%	
Sep	11.16	1.94	228	5	98%	213	3	99%	15.50	0.10	99%	27.8	3.8	86%	4.63	0.480	90%	16.20	0.17	99%	27.7	1.36			95%	
Oct	9.49	1.53	272	5	98%	252	4	98%	17.20	0.10	99%	34.1	2.2	94%	5.37	0.750	86%	18.90	0.29	98%	34	1.5			96%	
Nov	12.26	3.67	253	4	98%	236	3	99%	14.90	0.10	99%				6.30	0.471	93%	17.1	0.35	98%						
Dec																										
		TOT																								
Avg	16.91	41.92	187	7	96%	190	4.4	98%	12.75	0.10	99%	20.7	3.4	81%	3.89	0.446	88%	12.47	0.21	98%	20.53	1.37			93%	
<b>With data points remaining, TN = 3.1 mg/L and TKN = 1.9 mg/L</b>																										
<b>Ammonia limit equates to approx 6 mg/L monthly Avg. / TKN limit equates to 38 mg/L Monthly Avg.</b>																										
<b>TN limit is 6.0 mg/L From O1A REM = Removal %</b>																										
<b>The Permit for TN = Monitoring Monthly Avg. from Outfall OO1, Not to Exceed 639,261 lbs. as a Rolling 12 Month Avg.</b>																										
<b>Outfall OO1 includes Flow Through O1A (DN cells) and O1B (DN Cell Bypass)</b>																										
<b>These numbers represent Outfall from OO1</b>																										



**Landfill 2024 Summary**

Date	Digested	Lime Stab	Solids Total		Bar screen	Grit and Screen		Grease
	Tons	Tons	Tons	Cost	Tons	Tons	Cost	Tons
January	717.02		717.02	\$28,680.80		22.98	\$1,034.10	
February	613.29		613.29	\$24,531.60		17.01	\$765.45	
March	666.43		666.43	\$26,657.20		29.68	\$1,335.60	
April	685.81		685.81	\$27,432.40		23.46	\$1,055.70	
May	627.24		627.24	\$25,089.60		29.70	\$1,336.50	
June	623.85		623.85	\$25,035.20		22.74	\$1,023.30	
July	768.65		768.65	\$30,746.00		34.95	\$1,572.75	
August	812.06		812.06	\$32,482.40		26.29	\$1,183.05	
September	577.48		577.48	\$23,099.00		19.41	\$873.45	
October	779.48		779.48	\$31,179.90		23.54	\$1,059.30	
November	779.97		779.97	\$31,198.80		19.71	\$886.95	
December								
Average	695.57		695.57	\$27,830.26		24.50	\$1,102.38	
Total	7,651.28		7,651.28	\$306,132.90		269.47	\$12,126.15	
				\$40/Ton			\$45/Ton	

\$318,259.05

Annual Cost to Date

\$420,000 budgeted for 2024

ES8130.54804