

October Superintendents Report

11/12/2024

We received 1.53 inches of rain in October. Bringing us to 38.25 for the year.

The Average flow was 9.49 MGD and total of 294.32 MGD for the Month. Making this the lowest average flow month in 5 years.

CBOD = 272 mg/L in and 5 mg/L out for 98% removal

TSS = 252 mg/L in and 4 mg/L out for 98% removal.

Ammonia = 18.9 mg/L in and 0.3 mg/L out for 98% removal.

Phosphorus = 5.4 mg/L in and 0.7 mg/L out for 86% removal. This is the highest average in the last 12 months. We are actively pumping ferric to reduce this number and looking at Centrate from the mechanical thickeners.

Turbidity, we have seen a slight increase in our Turbidity, but the effluent still looks like drinking water.

Plant water pump bases were poured, cured, and forms stripped. We are ready for the pumps to arrive.

Completed the 5-Year Plan. This is a living document and will be updated every year. Keep in mind this is a plan not a directive. Asking for adoption by the board.

The Operations Department is performing jar testing with Polymer vendors and for Actiflo to maximize the efficiency of each system. Also looking at mechanical thickeners and Actiflo as contributing factors of the high Phosphorus numbers we've been getting in October. Adjusted feed to digesters and primary pumping rates. Superintendent and assistant Superintendent working together on details of new permit. Will have met Tuesday at 9:30 with Members of the new unified Permit.

The Mechanical department continued performing CMMS maintenance duties. Replaced bearing on South elevated grit conveyor. Working on Digester fan equipment and Gas Pumps for the digester mixing equipment.

The Electrical department continued PMs of all disconnects throughout the facility, wired in the Laser cutter and ran a test pattern. Currently waiting on material to cut UV Wiper parts. Completed verification of Wet-well Ultra-Sonic level detector. This is what drives the operation and speed of our Main Pumps. WesTech was here in October inspecting and training personnel on Digester cover equipment. Preparing to run Auxiliary ground for Plant water pumps.

We met with EDR this week to go over the 30% design at TPS.

The Business Manager scheduled a team-building exercise, which was a success.

Superintendents Summary Report for 2024																											
	FLOW	Precip	CBOD5		REM	Tot Susp Solids		REM	Settleable Solids		REM	Total Nitrogen			REM	Phosphorous			REM	Ammonia		REM	TKN		REM		
	MGD	Inches	In	out	%	In	out	%	In	out	%	In	out	%	In	out	%	In	out	%	In	out	In	out	In	out	
	AVG		limit			limit			limit			limit				limit				limit			limit				
			18 mg/L			20 mg/L			0.3 mL/L			6.0 mg/L				1.0 mg/L				1800 lbs./Day			11000 lbs/Day				
Jan	26.40	4.71	116	10	91%	123	5	96%	7.40	0.10	99%	12.9	3.6	72%	2.40	0.340	86%	7.30	0.14	98%	12.3	1.2	90%				
Feb	18.72	1.63	181	8	96%	194	3	98%	11.10	0.10	99%	17.8	3.9	78%	3.80	0.290	92%	12.90	0.15	99%	17.7	1.5	92%				
Mar	24.33	4.10	137	7	95%	153	4	97%	7.70	0.10	99%	14.2	4.8	66%	2.64	0.358	86%	9.00	0.149	98%	13.7	1.4	90%				
Apr	22.87	4.42	150	8	95%	170	5	97%	9.80	0.10	99%	14.9	4.4	70%	3.19	0.459	86%	9.50	0.202	98%	14.6	1.3	91%				
May	16.12	3.67	175	7	96%	176	4	98%	13.00	0.10	99%	20.4	4.0	80%	3.10	0.421	86%	10.70	0.151	99%	20.3	1.3	94%				
Jun	12.56	3.09	193	10	95%	193	7	96%	16.30	0.10	99%	25.6	2.0	92%	4.02	0.564	86%	12.70	0.331	97%	25.6	1.6	94%				
Jul	13.79	6.02	178	9	95%	194	6	97%	14.90	0.10	99%	21.4	2.3	89%	3.74	0.480	87%	12.20	0.199	98%	21.3	1.4	93%				
Aug	18.35	7.14	169	6	96%	189	4	98%	12.50	0.10	99%	18.2	3.2	82%	3.57	0.290	92%	10.70	0.164	98%	18.1	1.09	94%				
Sep	11.16	1.94	228	5	98%	213	3	99%	15.50	0.10	99%	27.8	3.8	86%	4.63	0.480	90%	16.20	0.17	99%	27.7	1.36	95%				
Oct	9.49	1.53	272	5	98%	252	4	98%	17.20	0.10	99%				5.37	0.750	86%	18.90	0.29	98%							
Nov																											
Dec																											
		TOT																									
Avg	17.38	38.25	180	8	95%	186	4.5	97%	12.54	0.10	99%	19.2	3.6	80%	3.65	0.443	88%	12.01	0.19	98%	19.03	1.35	92%				
With 2 data points remaining, TN = 2.1 mg/L and TKN = 1.5 mg/L																											
Ammonia limit equates to approx 6 mg/L monthly Avg. / TKN limit equates to 38 mg/L Monthly Avg.																											
TN limit is 6.0 mg/L From O1A REM = Removal %																											
The Permit for TN = Monitoring Monthly Avg. from Outfall OO1, Not to Exceed 639,261 lbs. as a Rolling 12 Month Avg.																											
Outfall OO1 includes Flow Through O1A (DN cells) and O1B (DN Cell Bypass)																											
These numbers represent Outfall from OO1																											

Landfill 2024 Summary

Date	Digested	Lime Stab	Solids Total		Bar screen	Grit and Screen		Grease
	Tons	Tons	Tons	Cost	Tons	Tons	Cost	Tons
January	717.02		717.02	\$28,680.80		22.98	\$1,034.10	
February	613.29		613.29	\$24,531.60		17.01	\$765.45	
March	666.43		666.43	\$26,657.20		29.68	\$1,335.60	
April	685.81		685.81	\$27,432.40		23.46	\$1,055.70	
May	627.24		627.24	\$25,089.60		29.70	\$1,336.50	
June	623.85		623.85	\$25,035.20		22.74	\$1,023.30	
July	768.65		768.65	\$30,746.00		34.95	\$1,572.75	
August	812.06		812.06	\$32,482.40		26.29	\$1,183.05	
September	577.48		577.48	\$23,099.00		19.41	\$873.45	
October	779.48		779.48	\$31,179.90		23.54	\$1,059.30	
November								
December								
Average	687.13		687.13	\$27,493.41		24.98	\$1,123.92	
Total	6,871.31		6,871.31	\$274,934.10		249.76	\$11,239.20	
				\$40/Ton			\$45/Ton	

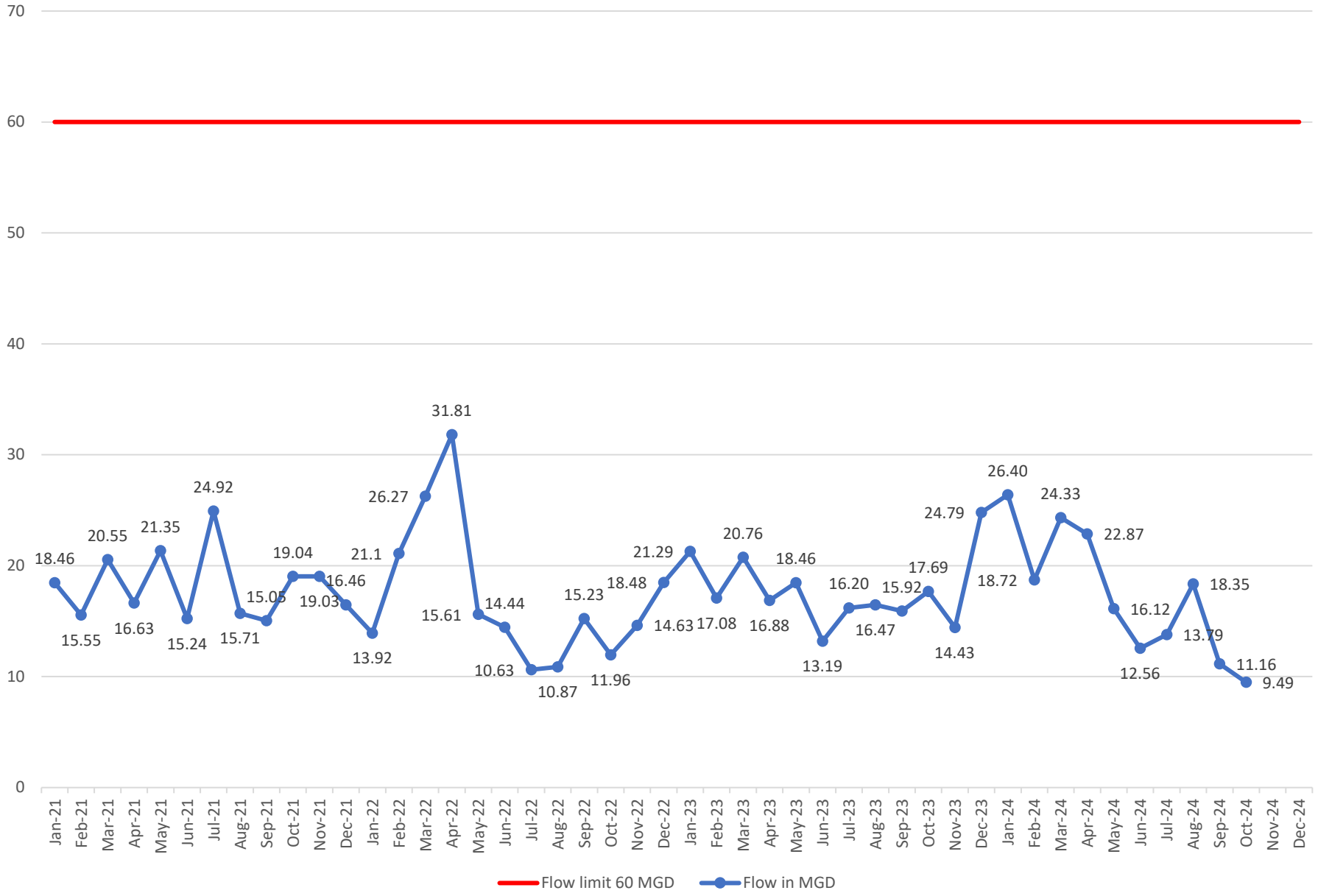
\$286,173.30

Annual Cost to Date

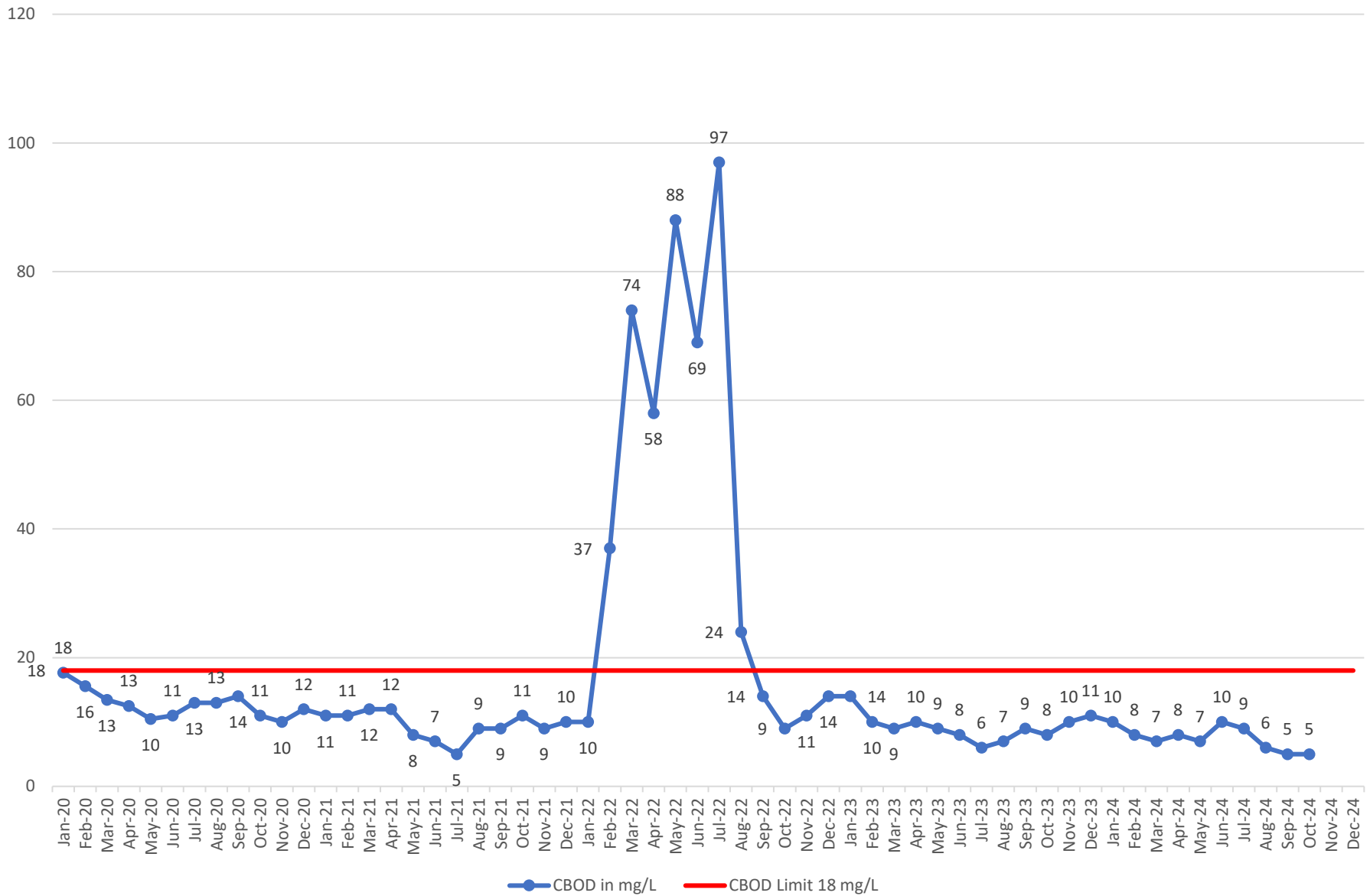
\$420,000 budgeted for 2024

ES8130.54804

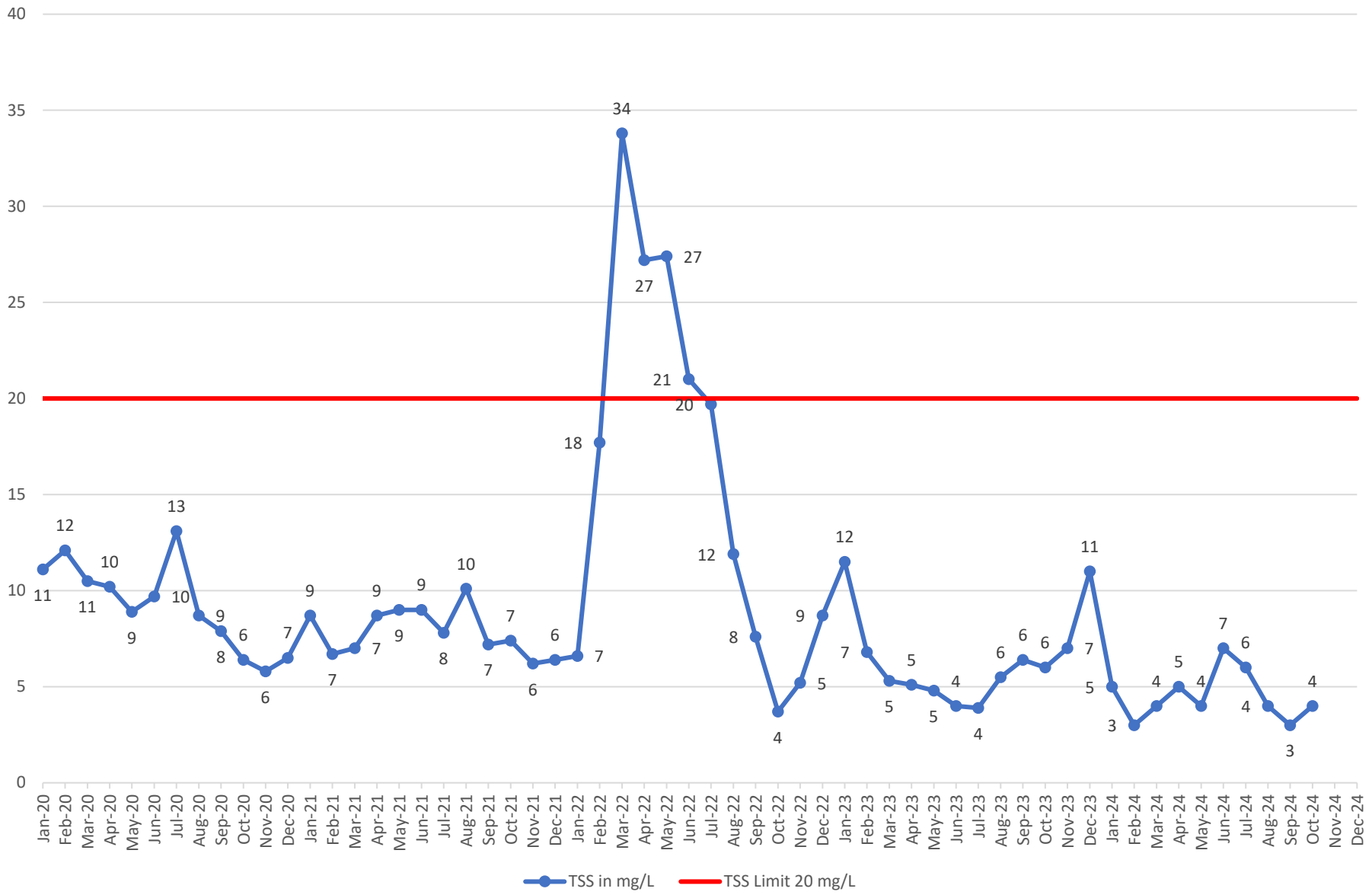
2021-2024 Flow



2020-2024 CBOD Limit = 18 mg/L/Day Monthly Avg

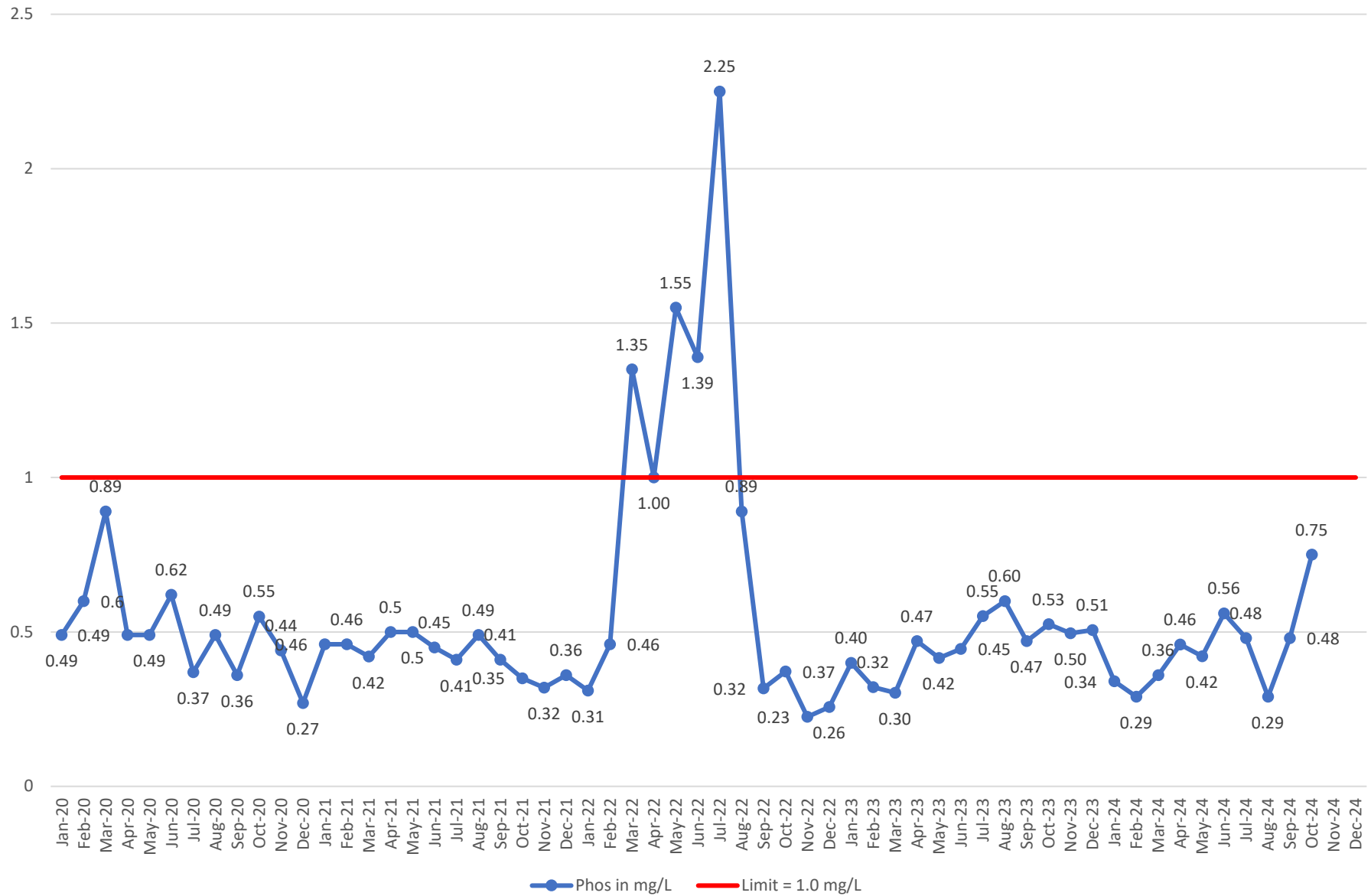


TSS 2020-2024 Limit = 20 mg/L/Day Monthly Avg



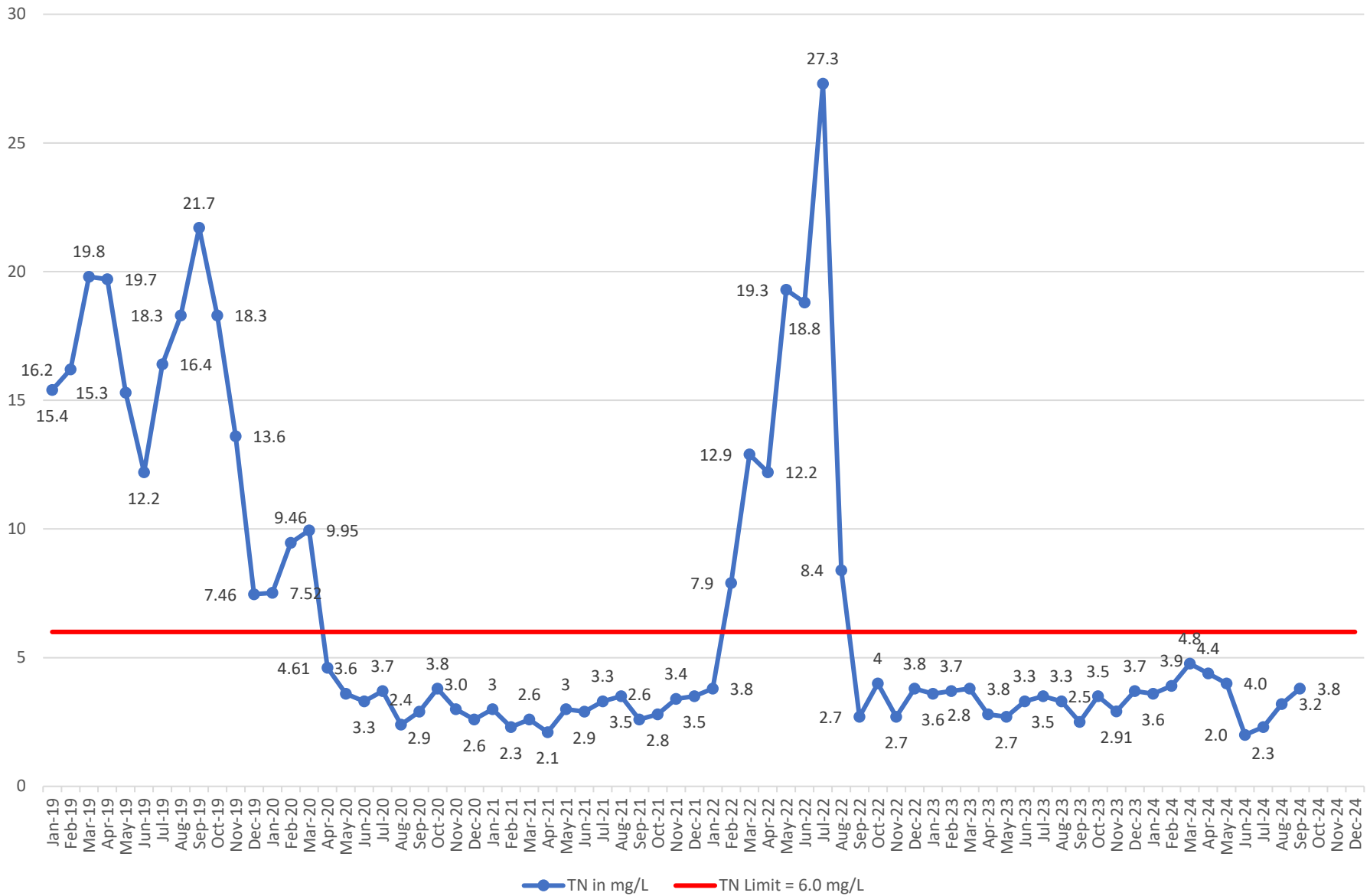
2020-2024 Phos

Limit = 1.0 mg/L/Day Monthly Avg



TN 2019-2024

Limit = 6.0 mg/L /Day Monthly Avg



2020-2024 NH3 in Avg. Lbs/Day
Limit = 1800 Lbs/Day

